

D50

2 IN 1 | 3 IN 1



Different FOV to Meet Various Clinical Application Needs



Small FOV for
Clearer Imaging FOV:5*5cm

- Single-Tooth Implant Planning
- EndoTreatment
- Third Molar Extraction



Medium FOV for
Enhanced Focus FOV:15 *9cm

- Single-Tooth Implant Planning
- Full-Arch Implant Planning
- Implant Placement with GBR
- TMJ
- Airway Analysis
- Oral Health Examination
- Maxillary Sinus Diagnosis

Metal Artifact Reduction Algorithm

- Removes shadows and streaks caused by metal restorations and root fillings
- Supports applying this algorithm before or after imaging



Image Display

Cephalometric Image



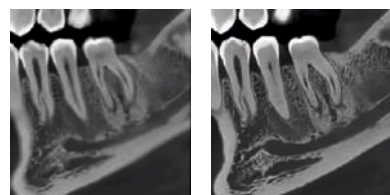
Palm Position Imaging



75 μ M Voxel Size Captures Smaller Details

The endodontic imaging mode with a voxel size of 75 micrometers is particularly suitable for displaying fine details, enhancing the precision of diagnosis for doctors.






100 μ m VS 75 μ m



Amorphous Silicon Flat Panel Detector

The amorphous silicon detector maintains strong image quality over time and does not experience significant degradation with increasing years of use.

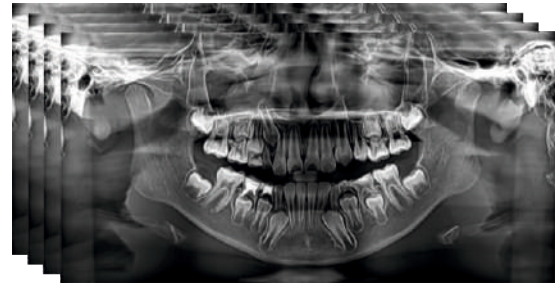
User Friendly Operation

-  2D and 3D Imaging With One Sensor
-  Face-to-Face Positioning Makes the Patient More Comfortable
-  Convenient Wheelchair Access Through Side-Entry
-  The Touch Screen makes Operation a Simple Way
-  2 Laser Lines for Easy Positioning and Higher Efficiency



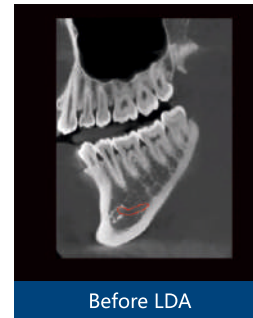
Multi-Layered

Completely upgraded panoramic algorithm that allows multi-layer display of anatomical structures, comprehensively enhancing the accuracy of panoramic diagnostics.



Ultra-Low Radiation

CT mode adds a low-dose algorithm, reducing the shooting dose by **44.4%**, minimizing unnecessary radiation exposure to patients and safeguarding their physical health.



Before LDA



After LDA

2000T

Integrated Stamping Machine Body

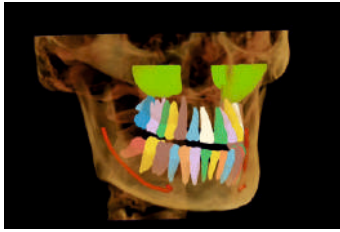


Italian CEI Tube

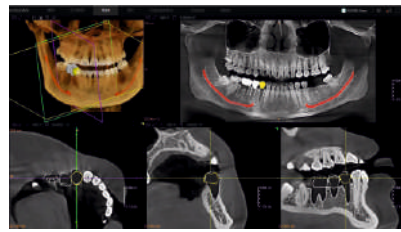
and high-speed Pulse Exposure



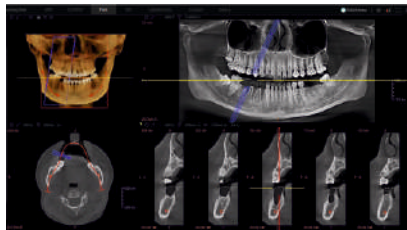
AI-driven One-stop Planting Planning



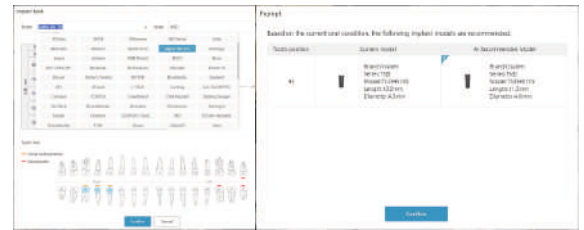
① Automatic Segmentation



③ Crown Simulation

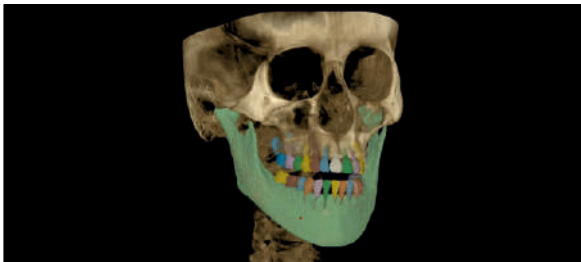


② Tooth Extraction Simulation



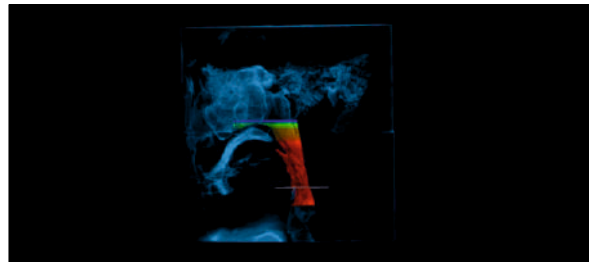
④ Comprehensive Implant Database & AI Implant Size Recommendation

Automatic Segmentations



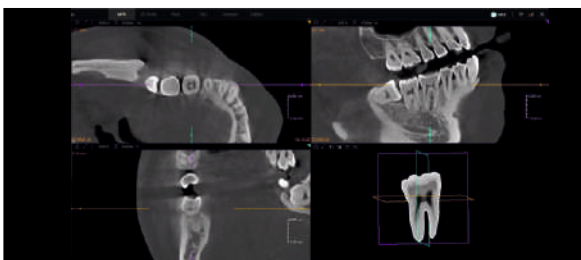
The segmented anatomies are ideal for patient education.

Airway Analysis

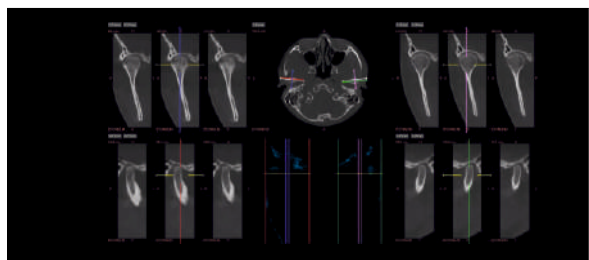


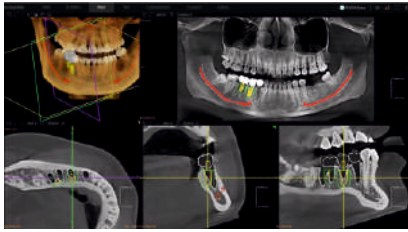
It can measure the airway volume of any segment and the cross-sectional area of the narrowest position, facilitating the auxiliary diagnosis of snoring or OSAS patients.

Single Tooth Simulation

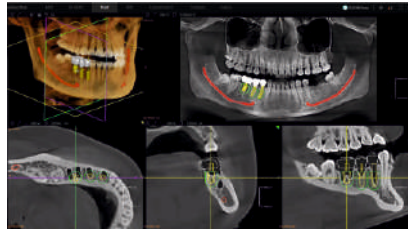


TMJ Joint Diagnosis

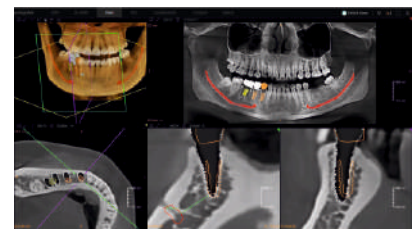




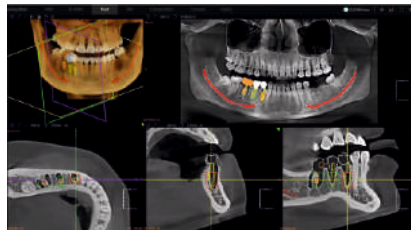
⑤ AI Implant Placement



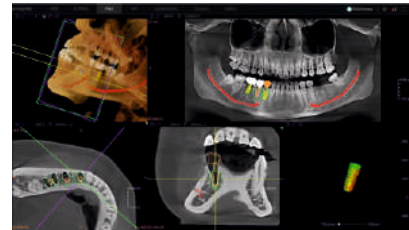
⑦ 360° Implant Center



⑨ AI Measurement



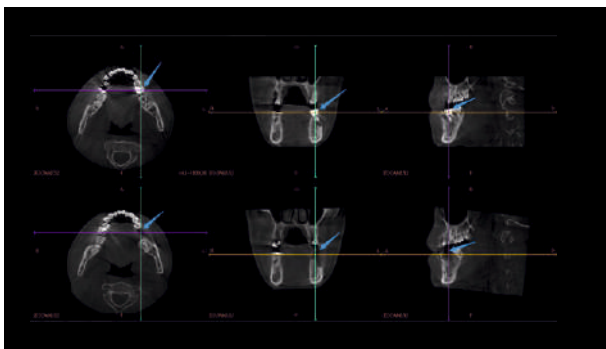
⑥ AI Warning System



⑧ Peri-Implant Bone Density Measurement

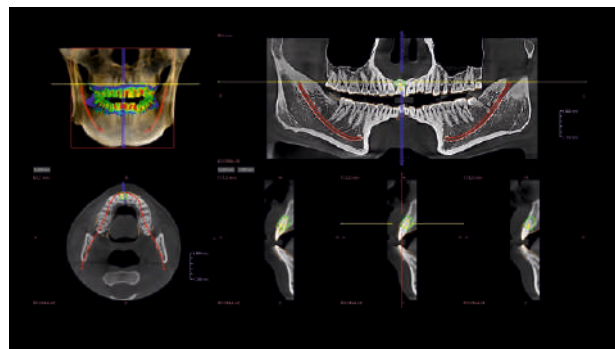
Intelligent AI Features

CT Image Comparison



Intuitively compare and assess subtle changes in tissue structure between two sets of images. This serves as the foundation for subsequent treatment planning and evaluation.

Combining CT and IOS Data



It can merge data from intraoral scanning and CT, exporting it in STL format, providing data for the design of implant guides.

AI-Powered Online Tools



Cloud-based AI Viewer

- No requirements for computer configuration
- You can view images by web page anytime anywhere



Multi-data Fusion

- Clinics send and track via cloud.
- Labs receive orders directly for faster processing.



AI Implant Planning

- AI-powered end-to-end automation in just 3 minutes.



AI Model Builder

- Create order, check results, export model
- Direct 3D-printable output boosts efficiency.



AI Crown Design

- Import scan data and generate AI implant guide.
- Review, adjust, and export surgical report.

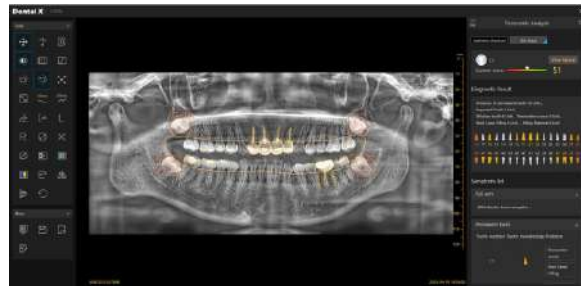
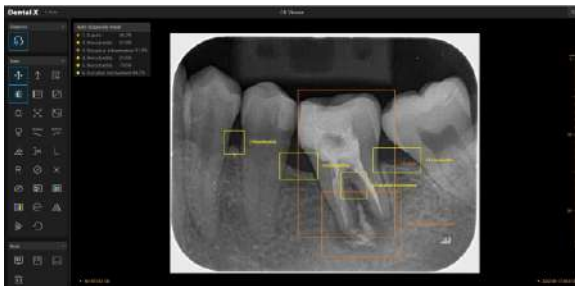


3D DSD

- Personalized treatment using integrated facial scans.
- Preview smile design builds patient trust

Cloud-based AI Viewer

- No software installation is required, just a browser is needed to open
- Supports Windows and Mac systems



Free and Efficient Cloud Functions



Cloud-Based Image Review

Review the image from the cloud anytime, anywhere. There is also a powerful 3D reading function that supports doctors to work more efficiently and freely.



Remote Consultation

In the diagnosis of complex cases, experts can use this feature to collaborate with doctors, share their opinions, and provide professional guidance on difficult and complicated conditions.



Cloud-Based Image Sharing

One-click Link Sharing of Images for Smoother Doctor-Patient Communication



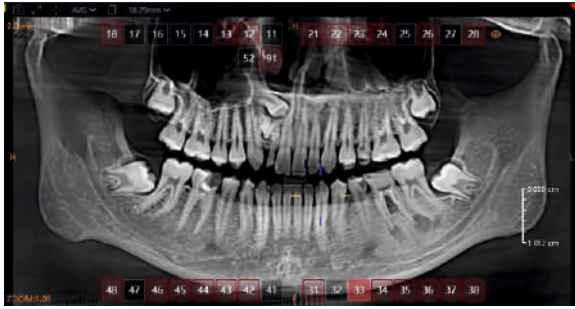
Cloud Storage

Unlimited storage space, reducing data storage costs, also ensures the permanent security of data.

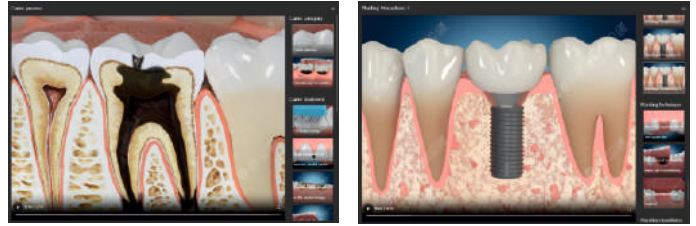


AI Diagnosis Assistant For 3D

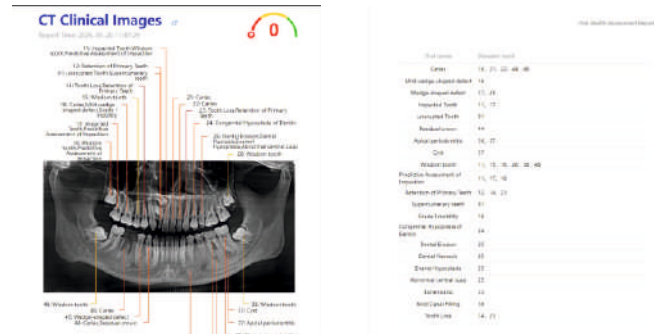
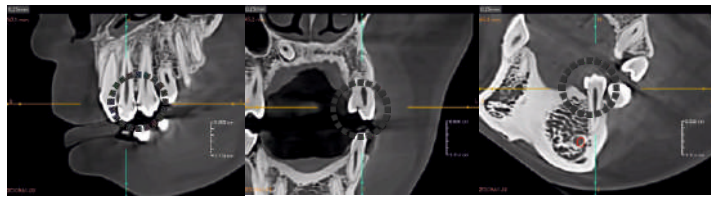
AI-Powered: Rapid and Accurate Disease Detection



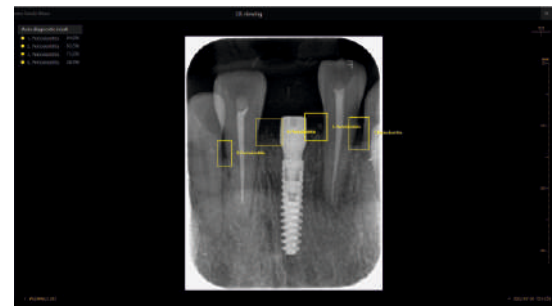
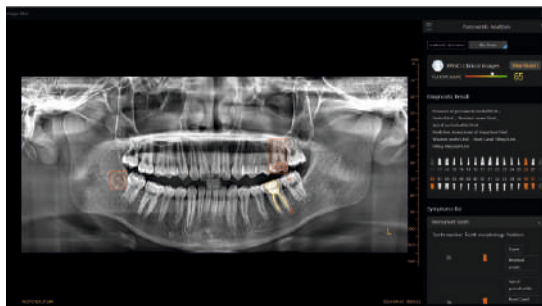
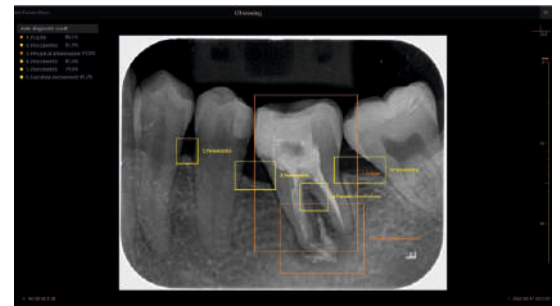
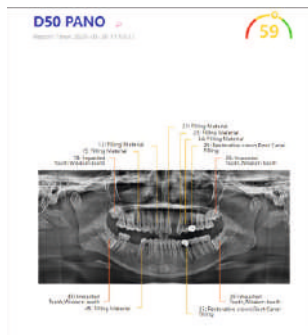
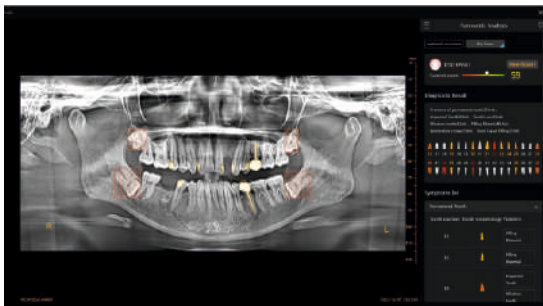
AI-Enhanced Doctor-Patient Communication Video and Report



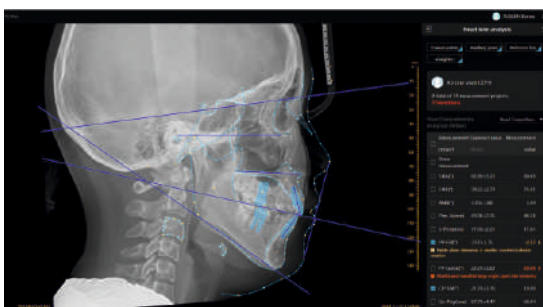
AI-Powered Precision: Displaying the Optimal View of Conditions



AI Diagnosis Assistant For 2D



CEPH Tracing and Airway Analysis



Technical Specification



Tube Voltage:	60-90kV	Voxel:	0.25; 0.2; 0.1; 0.075mm
Tube Current:	4-10mA	Total Filtration:	2.5mm Al
FOV(Diameter*Height):	15*9; 5*5	Scan Position:	Standing and Wheelchair
Focal Spot:	0.5mm	Exposure Time:	≤15s
Gray Scale:	16bit	Reconstruction Time:	<45s
Machine Dimension:	1840mm*1650mm*2280mm	Recommended Working Area	2500mm*2000mm*2500mm

Exposure Time

CT

PANO

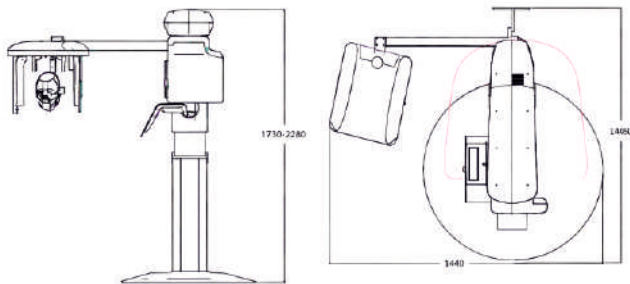
CEPH

Fussen D50	≤15sec	≤15sec	≤10sec
------------	--------	--------	--------

Dimentions

Recommend size(3 in 1)

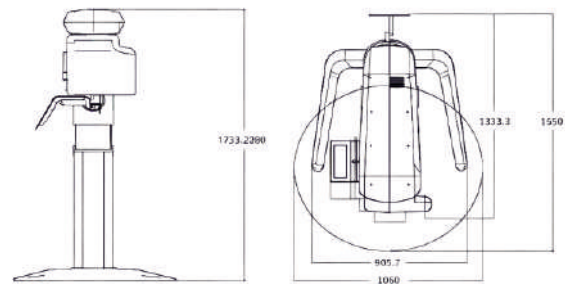
1. Room length 2500mm/width 2000mm/height 2500mm
2. Door width 800mm



3 in 1

Recommend size(2 in 1)

1. Room length 1300mm/width 2000mm/height 2500mm
2. Door width 800mm



2 in 1

Professional Support

AGKEM offers dedicated after-sales support through a skilled service team and multiple customer care channels, ensuring complete assistance at every stage.

- Professional site layout guidance
- Scheduled on-site installation services
- Personalized one-to-one training
- Complimentary remote software assistance
- Fast response through both online and offline support

Head Office: 503-504, Rishabh Corporate Tower, Community Centre, Karkardooma, Delhi, India 110092

Website: www.agkem.com

Contact us:



Sales



Instagram



Youtube



Website



LinkedIn



Service/Support



Facebook

AHMEDABAD | BENGALURU | CHANDIGARH | CHENNAI | DELHI | GREATER NOIDA | HYDERABAD | INDORE | JAIPUR | KOLKATA | MUMBAI