



CLINICAL PRODUCT CATALOGUE



9+ Offices



31+ Global Brands



200+ Products



AGKEM INTRAORAL SCANNER 3DS V3 PRO

DIGITAL^o
Chair-side System



- Auto Detection of Caries Calculus & Plaque
- Detachable C-Type Cable



*Humanized
Scanner Tip*



*Fashion &
Light Handpiece*



*Calibration
Free Scanner*



AI Fast Scan



Metal Scan



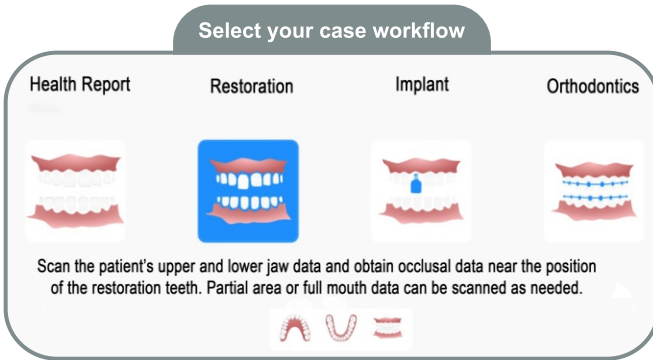
*3D
True Color*



*Perfect Integration
with Design
Software*



*Scan Body
Smart Matching*



Agkem Intraoral Scanner has fast and easy image capturing technology, which can provide reliable, accurate & complete data for digital dental impression. Providing patients with a comfortable & efficient treatment experience, our scanners make it easier for dentists to diagnose and communicate with patients.

PRODUCT SPECIFICATIONS

Powderless Model: IOS-11
Real Color Scanning

- Scanning Distance: 0-15mm
- Scanner Weight: 238g
- Scanner Light Source: LED
- Scanner Size: 240x49.5x30.5mm
- Imaging Mode: Synchronous 3D Video
- Smaller Scanner Tip Size: 80x16x11mm
- Quick Reset: Yes
- Calibration: No
- Operating Time: >30000hrs
- Remote Control Function: Yes
- Data Optimization: Yes
- Export File: STL, PLY, OBJ
- Image Capture Technology: Optical continuous video collection

SCANNER TIP

- 3 Normal Scanner Tip + 1 Smaller Scanner Tip
- Normal Scanner Tip Size: 79x19.7x15.8mm
- Tip Sterilized: Sterilized for 100 Times

traus SUS10

Ultrasonic / Implant Dual Engine



PIEZO

OPTIC

COMPACT



IMPLANT

- BLDC Motor, Speed Range (0-40,000 rpm) and Angle (Standard Equipment 20:1) provides the optimum torque in surgery.
- 9 Programs Memory Function
- Automatic Overload Protection Function, (If the load on the bur is higher than the present torque, the motor will stop automatically and show error on the screen.
- Motor Auto-calibration Function.

ULTRASONIC

- TRAUS XUS10 facilitates the surgeon's work, thanks to innovation ultrasound technology, only bone substance is resected with high precision.
- Own Piezo technology enables optimized performance with powerful output.
- Bone heating is avoided or minimized by injecting saline water at Max. 90ml/min speed.
- Multi functional and ergonomic foot switch design.
- TRAUS XUS10 Make various operation easy including Crestal approach, Sinus lift ridge expansion, Bone harvesting, Bone graft, Window open and many other.

HANDPIECE OPTION



TRAUS MBP10SL

- Optic : **Optic** • No
- Weight : 139 g
- Dimension : 127 x Ø25.7 mm



Optic

TRAUS CRB26LX

Optic

- Optic : **Optic** • Max. RPM : 2,000
- Gear Ratio : 20:1 • Min. RPM : 15
- Max. Torque : 70 N cm • Weight : 82g



Optic

TRAUS CRB27LX

Optic

- Optic : **Optic** • Max. RPM : 2,000
- Gear Ratio : 32:1 • Min. RPM : 15
- Max. Torque : 80 N cm • Weight : 82g



PEZ10XX

- Working Frequency : 27±3 KHZ
- Dimension : 148.5 x Ø23.8 mm
- Weight : 228g (with cord)

CONTROL BOX

- Input : AC 100-120 V, 220-240 V (50/60Hz)
- Output : 48VA
- Fuse : 5 A / 2 A
- Maximum Pumps : Max. 90±20%/ml /min
- Dimension : W 348 x D 276 x H 143 mm
- Weight : 3.6 kg

PIEZO HANDPIECE TIPS

2EA



SP-SAW

2EA



SP-SAW

1EA



SP-SAW L

1EA



SP-SAW R

2EA



SP-016

2EA



SP-016

1EA



SP-028i

1EA



SP-320

1EA



SP-400

1EA



SP-610

traus SUS20 (Optic)

PIEZO



ULTRASONIC PIEZO SINGLE ENGINE

•The Ultrasonic surgical equipment is designed for Osteoplastic Amputation, including dental implant surgery.

PRODUCT FEATURES

- 5 Programmable Memory Function
- 5 Saline Pump Levels
- Easy Irrigation Tube Installation
- Clean/Ready Function for added reliability
- Wide LCD Screen for easy control
- Waterproof IPX8 Foot Pedal

PIEZO SINGLE ENGINE

- Precise & Fast cutting
- Intuitive user interface
- Powerful performance
- Design for patient safety

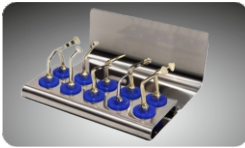
PEIZO HANDPIECE



OPTIC

PEZ10LN

- Frequency of Piezo Operation : 27 ± 3 KHz
- Weight : 228g (with cord)
- LED Power : 24,000 Lux



- Excellent Durability
- Easy Control Display

PRODUCT SPECIFICATIONS

CONTROL BOX

- Input: AC 100-120 V, 220-240 V
- Fuse: 5A/2 A
- Frequency: 50/60 Hz
- Output: 48VA
- Maximum Pump: Max. $110 \pm 20\%$ ml/min
- Dimensions (mm): W 285.5 x D 261 x H 121.7mm
- Weight: 3.35 kg



PIEZO TIPS

Standard					Option				
SP-SAW	SP-SAW L	SP-SAW R	SP-SAW R	SP-016	SP-028i	SP-320	SP-400	SP-610	SP-100
Block Bone / Ridge Expansion				Window Open	Crestal Approach	Implant Site Preparation, Bone Harvest	Sinus Lift	Extract	Scraper/Bone remodeling & harvesting of bone chips

traus SIP10 (Optic)

Implant Engine



NEW "STATE OF ART" TECHNOLOGY PRODUCT FEATURES

- BLDC motor (0-40,000rpm) with high performance designed by Saeshin's own high technology
- Compatible Gear Ratio - 1:5, 1:4, 1:1, 16:1, 20:1, 27:1, 32:1, 64:1
- E-type Motor : TRAUS MBP10SL(SX) followed "ISO3964" for standard connection (BLDC motor - 0-40,000rpm)
- 9 Programs Memory Function
- Automatic Overload Protection Function
- Indication of actual RPM and torque on operating for proper working condition
- Motor Auto-calibration Function
- Ergonomic Foot Controller
- Optic Function : (Option)
- Torque : 5-70 Ncm

ADVANCE IMPLANT ENGINE

- 9 Programmable memories
- Smart error diagnosis system
- Real time torque & RPM display
- Motor auto- calibration function
- Ergonomic design

HANDPIECE SPECIFICATION

Maintenance Friendly Easy to disassemble by hand without any tools for internal cleaning and maintenance



H/P	CRB26LX	CRB26XX	CRB27LX	CRB27XX	CRB46LN
Gear Ratio	20:1	20:1	32:1	32:1	20:1
Weight	82g	84g	82g	84g	82g
Optic	Optic	Non-Optic	Optic	Non-Optic	Optic
Torque	70Ncm	70Ncm	80Ncm	80Ncm	70Ncm
Max.RPM	2,000	2,000	1,250	1,250	2,000

E- Type Motor	MBP10SL	MBP10SX
RPM	40,000RPM	40,000RPM
Optic	Optic	Non-Optic
Dimension (MM)	L127.6x L131.6 x L296	
Weight	70Ncm	70Ncm

PRODUCT SPECIFICATIONS

CONTROL BOX

- Input : AC 100-120 V, 220-240 V
- Fuse : 5A / 2A
- Frequency : 50/60 Hz
- Output : Max. 230 W
- Maximum Pump : Max. 90 ± 20%ml
- Dimensions (mm) : W 233 x D 269 x H 123
- Weight : 2.8 kg



Implant CUBE

IMPLANT ENGINE

Our Most Popular Implant Engine!



FOOT CONTROLLER



- COMPACT
- ECONOMIC
- DURABLE



PRODUCT FEATURES

- BLDC motor (Speed Range 0-50,000rpm) and angle (Standard equipment 20:1) provides the optimum torque in surgery
- Compatible Gear Ratio - 1:5, 1:4, 1:1, 16:1, 20:1, 27:1, 32:1, 64:1
- 9 Programmable Memories for setting Speed, Torque, Rotating Direction Irrigation Pump
- Automatic Overload Protection Pump
- Actual RPM display for user's working condition
- Motor Auto-calibration Function
- Ergonomic Foot Control Pedal
- Membrane Touch Display
- Self-diagnosis Function

PRODUCT SPECIFICATIONS

CONTROL BOX

- Input : AC 100-120 V, 220-240 V
- Output : Max: 230 W
- Maximum Pump : Max. 75ml/min
- Weight : 3.3kg
- Fuse : 5A/2A
- Frequency : 50/60 HZ

H/P	CRB26XX	ACL(B)-41l	ACL-(B)-61l	ACL(B)-45l
Gear Ratio	20:1	20:1	20:1	32:1
Weight	84 g	60g	48g	60g
Type	Button	Button	Button	Button
Min.RPM	15	30	30	20
Torque	55 Ncm	55 Ncm	55 Ncm	65 Ncm

IMPLANT ENGINE for Hands-on

30-2,000 rpm (20:1)

5-55N/cm (20:1)

Revolution (FWD/REV)

Program (3 Memories)

Memory Setting

Irrigation Pump

ECONOMIC

BASIC

HANDS-ON

IM40

ACL(B)-61I

CONTROL BOX

- Input : AC 100-120 V, 220-240 V
- Output : 48 VA
- Fuse : 5A / 2 A
- Maximum Pump : Max. 90 ± 20%ml/min
- Dimensions (mm) : W 185 x D 254.3 x H 112.2mm
- Weight : 2.94 kg

Program (3 Memories)	Revolution (FWD/REV)	Irrigation Pump
Memory Setting	5-55 N/cm (20:1)	30-2,000 rpm (20:1)

IM40	
• Dimension	: 135.2 x Ø26.8 mm
• Weight	: 285 g

ACL(B)-61I			
• Gear Ratio	: 20:1	• Max. RPM	: 1,500
• Max. Torque	: 55 Ncm	• Min. RPM	: 30
		• Weight	: 48 g

TRAUS CAB20ND B2

DIRECT-CONNECT

NON-OPTIC



PUSH BUTTON CHUCK



Push Button Chuck is an elaborately & properly designed Mechanism that allows easy insert & remove burs with a simple "ONE PRESS" of button.

EFFICIENT CARTRIDGE



This exceptional traus-designed Cartridge features maximum efficient Torque that never runs out.

CERAMIC BALL BEARING



Despite its lighter weight compared to steel, this ceramic bearings with higher rigidity makes the air turbine run longer with minimum noise

TI- COATING



Ti- coating applies the latest titanium coating technology which not only increases scratch resistance & durability, but also provides a comfortable grip without slipping.

PRODUCT SPECIFICATIONS

- Optic : Non Optic
- Max RPM : 440,000 rpm
- Dimensions(mm) : Ø 14.5 x W 116.7 mm (Head: Ø11.2 x H13.8 mm)
- Body Material : Stainless Steel



PORTABLE AND DESKTOP TYPE

A Rechargeable
Cord Type Endo
Rotary



PRODUCT SPECIFICATIONS

- Auto Reserve Function
- Torque control from 0.6 to 5.2 N/cm
- Gear Ratio - 1:1, 4:1, 10:1, 16:1, 20:1
- 9 Programs
- Foot on/off switch
- Up to 5 hours battery life
- Compact designed controller including various function
- Stable torque supply
- Operation available with battery or adapter
- Endo motor with Reciprocative function

E-CUBE

- Input : DC 20 V, 1.5 A
- Output : DC 6 V
- Charging Time : approx. 5 hours
- Dimension : W 110 x D 196.7 x H 138.3 mm
- Output : 582 g

SIMPLIS & HANDPIECES



The SIMPLIS works on any handpiece angle. It's a Lubrication System which prevents hands from getting dirty. This handpiece Lubrication system is simply called "SIMPLIS".

Maximizes high air pressure

Cleans & Oils at the same Time

Available for the following handpiece types:

1. High speed handpiece (Turbine HP)
2. Low speed handpiece
3. Contra angle handpiece
4. Implant handpiece



High speed handpiece
(Turbine HP)



Low speed handpiece

STRAIGHT HANDPIECE



AT-II

- Straight angle
- Max 35,000rpm
- Ergonomic Design
- Autoclavable
- HP Bur (2.35)

CONTRA ANGLE HANDPIECE



ACL(B)-01C

- Push button type
- Max 35,000rpm
- Ergonomic Design
- Autoclavable
- CA Bur (2.35)

BRUSHLESS E-TYPE SEALED MOTORS

- Quite and strong torque
- Available in various handpiece angles in accordance with ISO standards
- Sealed tight and water-proof for sterilization

TRAUS

MBP10SL (40k)



Optic



OPTIC FUNCTION :

(Option) 40K BLDC MOTOR
(TRAUS MBP10SL)

FORTE

100 α (50k)



BRUSHLESS E-TYPE MOTOR with 50,000rpm

(TRAUS series : 40,000rpm)

CARBON BRUSH E-TYPE MOTOR

- Available for various angles in accordance with ISO standard

STRONG

108E (40K)



- RPM : Max 40,000 rpm.
- Torque : 280 gf.cm
- Input : 100,110/220, 240V (50/60 Hz).
- Body Material : DC-32V.

CLINICAL MICRO MOTORS

OZ-BLACK

Desktop type **BRUSHLESS** high performance
Strong torque at low speed Vertical/Horizontal
placement



SPECIFICATION

- RPM : max 50,000rpm
- Torque : 7.8 N/cm
- Input : 100-120, 220-240V (50/60Hz)
- Output : 230V
- Right & Left turning ability
- Hand/Foot speed control system

204C-108E

Basic Model, **Mini-compact design**
Less-vibration standard carbon brush motor



SPECIFICATION

- RPM : max 40,000rpm
- Torque : 280 gf.cm
- Input : 100-120, 220-240V (50/60Hz)
- Output : DC0-32V
- Right & Left turning ability
- Foot on/off switch

CARBON BRUSH E-Type MOTORS

90-108E

*Basic Model, Mini-compact design
Less-vibration standard carbon brush motor*



SPECIFICATION

- RPM : max 40,000rpm
- Torque : 280 gf.cm
- Input : 100-120, 220-240V (50/60Hz)
- Output : DC0-32V
- Right & Left turning ability
- Foot on/off switch

210-108E

*Basic Model, Mini-compact design
Less-vibration standard carbon brush motor*



SPECIFICATION

- RPM : max 40,000rpm
- Torque : 280 gf.cm
- Input : 100-120, 220-240V (50/60Hz)
- Output : DC0-32V
- Right & Left turning ability
- Foot on/off switch

204S-108E

*Basic Model, Mini-compact design
Less-vibration standard carbon brush motor*



SPECIFICATION

- RPM : max 40,000rpm
- Torque : 280 gf.cm
- Input : 100-120, 220-240V (50/60Hz)
- Output : DC0-32V
- Right & Left turning ability
- Foot on/off switch

INTRAORAL CAMERA

WITH WIFI



SPECIFICATION

- Can take 1 & 4 Pictures
- HUAWEI HI Silicon Chip
- Sony 12 Megapixel Camera
- 8G Storage-In USB disk
- HDMI+USB interface;
- 6-LEDS (with glass cover)
- Wifi connection option

Gross Weight: 6.0kg

Monitor: 38*37*2cm

LCD Clamp: 34*27*2cm

**Unit Package Size:
57.1cm*41.9cm*11.8cm**

**Focal Length:
3mm-50mm. Auto focus**

INTRAORAL CAMERA



SPECIFICATION

- Can take 1 & 4 Pictures
- HUAWEI HI Silicon Chip
- Sony 12 Megapixel Camera
- 8G Storage-In USB disk
- HDMI+USB interface;
- 6-LEDS (with glass cover)

Gross Weight: 6.0kg

Monitor: 38*37*2cm

LCD Clamp: 34*27*2cm

**Unit Package Size:
57.1cm*41.9cm*11.8cm**

**Focal Length:
3mm-50mm. Auto focus**

TABLE TOP VACUUM STERILIZER

23-LITRE

B - CLASS AUTOCLAVE



AMERICAN
MCP CHIP

DIGITAL
DISPLAY

ADJUSTING
DOOR HOOK

INBUILT
PRINTER

PARAMETER

- Voltage: 110V/240V, 50Hz/60Hz
- Power: 2000W
- Volume: 23L
- Chamber Dimension: Φ 245x465mm
- Machine Dimension: 590x415x410mm
- Weight: 45Kg

CHARACTERISTICS

- Rapid sterilization, the whole process only needs 25 minutes
- Touch digital or LCD display technology, visual display of temperature, time, alarm, etc.

WATER DISTILLER



SPECIFICATION

- Voltage: 220V/50Hz
- Power: 750W
- Water Transmission: 1.2L/h
- Chamber Size: 18x18.5 CM
- Boundary Dimension: 22.5 x 27.0 x 30CM
- Weight: 3.2 kg
- Packing Size: 26.8 x 26.8 x 44CM

ROOT CANAL SHAPING SYSTEM PREMIUM TC FILES



Model	Taper	Speed	Torque	Length [mm]	
17#	.08	250rpm	3.0 N.cm	19	
15#	.03	200rpm	0.8 N.cm	21	25
20#	.04	250rpm	1.0 N.cm	21	25
25#	.04	250rpm	1.5 N.cm	21	25
30#	.04	300rpm	2.0 N.cm	21	25
30#	.06	300rpm	2.0 N.cm	21	25
Assorted Pack: 17/8 15/3 20/4 20/6 25/4 25/6				21	25



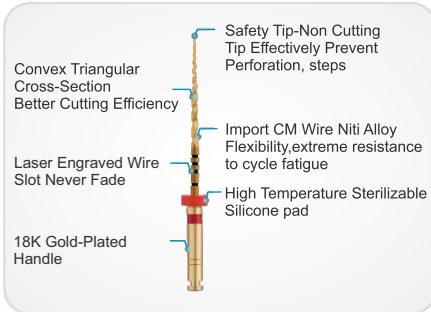
Heat Activation



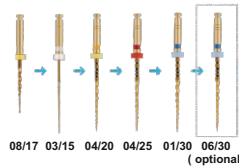
Product Details



Scientific Sequence Design



The crystal phase conversion is controlled by special thermal processing to make the file present unique silver, gold and blue



Model transition is smooth, making operation easier & more sufficient



1. Imported CM-Wire NITI memory alloy
2. Excellent flexibility & resistance to cyclic fatigue
3. Triangular cross section design
4. Keep center stiffness & high cutting efficiency
5. Guiding non cutting force safety tip
6. Efficient compliance with root canal guidance downward
7. 04/06 Smaller tapered design
8. Scientific sequence design

STAR SOFT PUTTY

A-Silicone Impression Material



INDICATIONS

- Crown & Bridge impressions
- Full arch impressions in Implantology
- Veneer / Laminate

FEATURES

- Excellent detail Reproduction of margins
- Impression with Unmatched accuracy
- Superior Wetting Characteristics

SPECIFICATION

- Working Time: 1:30 min
- Setting Time: 3-4 min

PACKAGING

- 1 x 500gm Base
- 1 x 500gm Catalyst

SOFT LIGHT BODY

A-Silicone Wash Impression Material



- VINYL POLYSILOXANE IMPRESSION
- MATERIAL LIGHT-BODIED
- CONSISTENCY-HYDROPHILIC

FEATURES

- Working time: 1:30 min
- Setting time: 3-4 min
- Hardness (Shore A): 53
- Elastic recovery: 99.77%
- Liner Dimensional change: <math><-0.2\%</math>

MINTOGIN

Alginate Impression Material



- NON CHROMATIC
- DUSTFREE
- REGULAR SET
- HIGH ELASTICITY
- IMPROVED TEAR RESISTANCE

FEATURES

- Mixing Time: 45s
- Operation time: 1m35s
- Total setting time: 2m55s
- The recovery degree: >98.2%
- Strain to the pressure: 3.4%-26%

ULTRASONIC CLEANER

CD 4830 (with Heater)



**Digital
Ultrasonic
Cleaner**

CONTROL BOX

- Tank Capacity : 3,000 ml
- Tank Size : 9.8" x 6.9" x 3.1"
- Digital timer setting : 1 to 30 min
- Tank Material : Stainless Steel SUS304
- Power Supply : AC 220~240V, 50/60Hz
- Ultrasonic Power : 70W
- Heating Power : 100W
- Moisture-proof PCB.

ULTRASONIC CLEANER

CD 4820 (with Heater)



- Digital Control
- LED Display
- 5 Timer Setting
- Controlled Heating

CONTROL BOX

- Tank Capacity : 2500 ml
- Max Level : 2100 ml
- Tank Size : 9.6" x 5.9" x 3"
- Digital timer setting : 1 to 30 min
- Tank Material : Stainless Steel USU 304
- Power Supply : 50/60 Hz
- Longest item fir Inside tank : 7.5"

AIR COMPRESSOR



MEDIAIR-850

**Oil Free / Low Noise
Air Compressor**

SPECIFICATION

- Noise : 55 db
- Tank : 35 L
- Capacity : 156 L/Min
- V/Hz : 220V/50Hz
- Power : 850 W
- Weight : 30 kg
- Size : 440 x 440 x 570 L/Min
- Pressure : 6-8 bar
- HP : 1.10

AIR COMPRESSOR



MEDIAIR-580

**Oil Free / Low Noise
Air Compressor**

SPECIFICATION

- Noise : 50 db
- Tank : 35 L
- Capacity : 105 L/Min
- V/Hz : 220V/50Hz
- Power : 580 W
- Weight : 30 kg
- Size : 440 x 440 x 570 L/Min
- Pressure : 6-8 bar
- HP : 0.75

APL Y-SMART MAX ENDO MOTOR (LED)



Reciprocating operation Preventing needle breakage efficient and safe



LED Light, Clarity & Stability



4 Buttons for Easy Operation Rich Mode, Easy to Switch

FEATURES

- Cordless and simple interface design
- Ergonomic and compact design
- Non-contact type charge design
- Push button type head for easy exchange files

TECHNICAL PARAMETERS

- Host Voltage: 3.7V/800mAh
- Input Voltage: ~AC100-240,50z/60Hz
- Output Voltage: DC5V
- Output Current: 1A
- Torque range: 0.6Ncm-4.0cm
- Rotation range: 120rpm-600rpm
- Speed ratio: 16:1

LED CURING LIGHT

CV-215 (G1)



FEATURES

- 1 sec for curing, go quicker than ever
- Constant power output, born for restoration
- Ergonomics design, optimize the hand-grip use
- 360 degree rotatable head, extend the possibility

SPECIFICATION

- Wavelength: 430-485nm
- Light intensity: 800mW/cm²-1400mW/cm²
- Light bulb: 1 bulb
- Light Guide: Metal Rod
- Power: 5W
- Input Voltage: AC 100-240V 50/60 Hz
- Mode: P1 Progressive: 5.10.15.20
P2 Pulse: 5.10.15.20
P3 Strong: 1.2.3

LED CURING LIGHT

CV-215 (G2)



FEATURES

- 1 sec for curing, go quicker than ever
- Constant power output, born for restoration
- Ergonomics design, optimize the hand-grip use
- 360 degree rotatable head, extend the possibility

SPECIFICATION

- Wavelength: 385-515nm
- Light intensity: 800mW/cm²-1800mW/cm²
- Light bulb: 4 LED bulbs
- Light Guide: Metal Rod
- Power: 10W
- Input Voltage: AC 100-240V 50/60 Hz
- Mode: P1 Progressive: 5.10.15.20
P2 Pulse: 5.10.15.20
P3 Strong: 1.2.3

AIR ROTOR

SUPER TORQUE



- Ceramic bearing
- Push button type
- Steel body with scratch resistant coating
- Noise free

SPECIFICATION

- Technical : Super Torque
- Head Size (WxH): 12.7mm x 13.1mm
- Drive Air Pressure(Mpa): 0.25-0.3
- Power (WATT): 25
- Speed (RPM): 280,000
- Rotary Instruments: FG burs according to EN ISO 1797 - 1:2011
- O/max.Length(mm): 1.6/25
- Water Spray: Single port

AIR ROTOR

STANDARD TORQUE



SPECIFICATION

- Technical : Standard Torque
- Head Size (WxH): 11 mm x 13.3mm
- Drive Air Pressure(Mpa): 0.2-0.25
- Power (WATT): 22
- Speed (RPM): 300,000
- Rotary Instruments: FG burs according to EN ISO 1797 - 1:2011
- O/max.Length(mm): 1.6/25
- Water Spray: Single port

AIR ROTOR SUPER TORQUE LED



Direct led - led is optionally positioned on the face of the hand piece to provide a large light - pattern than traditional fiber optic system.

SPECIFICATION

- Technical : Super Torque LED
- Colour temperature (K): 5,500
- Brightness (LUX): 25,500
- Head Size (W x H): 12.7mmx13.1mm
- Drive Air Pressure (MPA): 0.25-0.3
- Speed (RPM): 280,000
- Power (WATT): 25
- Rotary Instruments: FG burs according to EN ISO 1797-1:2011
- O/max.Length (mm): 1.6/25
- Water Spray: Triple ports

AIR ROTOR STANDARD TORQUE LED



SPECIFICATION

- Technical : Standard Torque LED
- Colour temperature (K): 5,500
- Brightness (LUX): 25,500
- Head Size (W x H): 11mm x 13.3mm
- Drive Air Pressure (MPA): 0.25-0.3
- Speed (RPM): 300,000
- Power (WATT): 22
- Rotary Instruments: FG burs according to EN ISO 1797-1:2011
- O/max.Length (mm): 1.6/25
- Water Spray: Triple ports

AIR ROTOR SURGICAL

45° ANGLED LED



It Provide excellent accessibility and visibility to make stress free treatment, 45° hand piece feature 22 W of cutting power for faster preparation and increase patient safely.

SPECIFICATION

- Technical : Surgical Angled LED
- Colour temperature (K): 5,500
- Brightness (LUX): 25,500
- Head Size (W x H): 11mmx13.3mm
- Drive Air Pressure (MPA): 0.25-0.3
- Speed (RPM): 300,000
- Power (WATT): 22
- Rotary Instruments: FG burs according to EN ISO 1797-1:2011
- O/max.Length (mm): 1.6/25
- Water Spray: Four ports

AIR ROTOR SURGICAL

45° ANGLED NON-LED

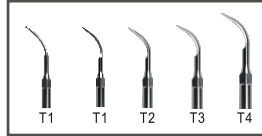


SPECIFICATION

- Technical : Surgical Angled Non-LED
- Colour temperature (K): 5,500
- Brightness (LUX): 25,500
- Head Size (W x H): 11mmx13.3mm
- Drive Air Pressure (MPA): 0.25-0.3
- Speed (RPM): 300,000
- Power (WATT): 22
- Rotary Instruments: FG burs according to EN ISO 1797-1:2011
- O/max.Length (mm): 1.6/25
- Water Spray: Four ports

B5 ULTRASONIC SCALER

5 Scaling Tip Free Sealed Handpiece Work Steadily



FEATURES

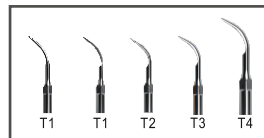
- Automatic frequency tracking
- Continuous 1500 hours test without problem

SPECIFICATION

- Power Input: 230V, 50/60 Hz
- Frequency: 28Khz+3Khz

B5L ULTRASONIC SCALER

5 Scaling Tip Free Sealed Handpiece with Light Work Steadily



FEATURES

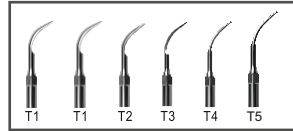
- Automatic frequency tracking
- Continuous 1500 hours test without problem

SPECIFICATION

- Power Input: 230V, 50/60 Hz
- Frequency: 28Khz+3Khz

P4 ULTRASONIC SCALER DETACHABLE H/P

Detachable h/p can be autoclaved under the high temp. & pressure (135°C, 0.22Mpa) 6 Scaling Tip Free



SPECIFICATION

- Adapter Input: 230V, 50/60 Hz
- Output Power: 3W to 20W
- Atmospheric pressure: 700 hpa to 1060 hpa
- Frequency: 28Khz±3Khz
- Weight of main Unit: 1 Kg

WATER DISPENSER



This pump can make any scaler - a portable scaler most widely used most economical, Reliable, Easy to use and maintain.

SPECIFICATION

- Model: X1
- Function: Auto- Water Supply
- Size: 207x207x275mm
- Storage Capacity: 1000ML
- Water Pressure: 18KPa~24KPa
- Gross Weight: 0.91kg
- Power: Portable Adapter
- Input: 100-240V



MUMBAI OFFICE

412, 4th Floor Plot No.X21, MIDC Cross Road21,
Marol Industrial Area, Andheri East, Mumbai
Mob.: 9702494674
E-Mail:vivek.shukla@agkem.com

AHMEDABAD OFFICE

Shed No:74, Sankalp Industrial Park, Nr.S.P. Ring
Road, Nana Chiloda, Ahmedabad - 380016
Mob.:8000101128 E-Mail:ahmedabad@agkem.com

KOLKATA OFFICE

Ground Floor, Opposite of SP office Singur, Singur
Natanbazar, Hooghly, West Bengal-712409
Mob.:9599001079 E-Mail:info@agkem.com

GREATER NOIDA OFFICE

Site no - 4, d-11, kansa industrial area, greater Noida,
Gautam Buddha Nagar, Uttar Pradesh, 201308
Ph. No.:+91 120 4290836 E-Mail:store.gn@agkem.com

CHENNAI OFFICE

Survey No 127/4, Godown No 5, Varalakshmi Nagar,
Maduravoyal, Chennai, Tamil Nadu, 600095
Mob.:9319177355 E-Mail:chennai@agkem.com

BENGALURU OFFICE

Shop No:03, Ground Floor, Near Global IT Park,
Pattanager Main Road, Rajarajeshwari Nagara
Begaluru-560098, Karnataka
Mob.:9702187973 E-Mail:jekin@agkem.com

HYDERABAD OFFICE

Shop 6, Plot no. 44, Mamta Nagar Colony ,
Road No. 1, Nagole Hyderabad-68
Mob.:9599001079 E-Mail:info@agkem.com

JAIPUR OFFICE

Shop no. 13-14 near Geetanjali Hotel Toll Tax, Tonk
Road, Sanganer, Jaipur Ph. No.:0141 486 6081
Mob.:9571467111 E-Mail:deepak@agkem.com

Agkem Impex Pvt. Ltd.

Head Office (Delhi)

📍 503-504, Rishabh Corporate Tower, Plot no.16
Community Center, Karkardooma, Delhi-110092

☎ 011-43022244/55/66

✉ info@agkem.com 🌐 www.agkem.com

📞 Customer Support:- 9599001079



To Know More, Please Visit