

Agkem®



LAB PRODUCT CATALOGUE



9+ Offices



31+ Global Brands



200+ Products

EXCLUSIVE
DISTRIBUTOR

Profeta[®] Vp100 Pro

SLM Technology 3D Metal Printer

Versatile Printer 100 Pro

PRODUCT CODE : 02F2



Dual mode machine for easy powder switching

VERSATILE PRINTER 100 PRO (VP100 PRO)

| | |
|-----------------------|--|
| Building Volume | Φ120mm, z=70mm |
| Layer Thickness | 30/40 μm |
| Scanning Speed | 15m/s(max) |
| Productivity | 130copings/3.5-4.5 hours 10RPD frames/3-3.5 hours |
| Laser Type | Yb-fiber laser, 200W/300W |
| Laser Beam Diameter | 40~60 μm |
| Power | AC220V, 12A 2.5KW |
| Shielding Gas | Argon/Nitrogen |
| Machine Dimension | 900*680*1760mm |
| Weight | 480kg |
| Operating Temperature | 18~30 °C |
| Materials | CoCr, Ti, TC4 |
| Applicable Products | Copings, RPD frames, post & core, surgical guide, orthodontic appliance etc. |

DEDICATED DENTAL METAL 3D PRINTER



- ◆ **Dual-mode** printer supports Cobalt-Chromium and Titanium, and the switching time is only 45 minutes;
- ◆ Easy to start with Cobalt-Chromium mode and be able to upgrade to dual-mode later on;
- ◆ Equipped with glove box and built-in cleaner to implement **closed powder cleaning** and to avoid harmful dust;
- ◆ High printing quality for RPD frames, copings, post & core, surgical guide, orthodontic appliance etc;
- ◆ Proved stability in domestic and global market.

ONE-STOP SOLUTION PACKAGE

- ◆ The one-stop solution package includes design software, slicing software, furnace, automatic screening cabinet and nitrogen generator;
- ◆ Our solution achieves synergy effects for better quality and efficiency.



CUSTOMER VALUE



- ◆ Designed for **small-middle scale dental labs**, and greatly supports all scale labs which require frequent powder switching;
- ◆ Compact machine, requires minimum facility area, and easy to transport through elevator;
- ◆ One dual-mode printer serves the purpose of two machines;
- ◆ Closed powder cleaning function is designed for better HSE.

EXCLUSIVE
DISTRIBUTOR

Profeta[®] IE 150

Intelligent and Expert Efficient

SINGLE LASER

SLM Technology 3D Metal Printer

PRODUCT CODE : 02GN



Also Available in
DUAL LASER



Single lasers for CoCr or Ti

INTELLIGENT & EXPERT PRINTER (IE150)

| | |
|-----------------------|--|
| Building Volume | Φ158 mm, z=70 mm |
| Layer Thickness | 20/50 μm |
| Scanning Speed | 15m/s(max) |
| Productivity | 220 copings/3.5-4.5 hours 15 RPD frames/3-3.5 hours |
| Laser Type | Yb-fiber laser*2, 200W/300W |
| Laser Beam Diameter | 40~60 μm |
| Power | AC220V, 16A 3.5 KW |
| Shielding Gas | Argon/Nitrogen |
| Machine Dimension | 1070*670*1750 mm |
| Weight | 500 kg |
| Operating Temperature | 18~30 °C |
| Materials | CoCr, Ti, TC4 |
| Applicable Products | Copings, RPD frames, implant bar, surgical guide, orthodontic appliance etc. |

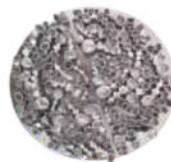
DEDICATED DENTAL METAL 3D PRINTER



- ◆ Equipped with dual lasers for faster printing speed;
- ◆ Larger building volume (Φ158 mm, z=70 mm) for higher production
- ◆ Higher powder utilization
- ◆ Support two printing layer thickness (20/50μm);
- ◆ Proved stability in domestic and global market.

ONE-STOP SOLUTION PACKAGE

- ◆ The one-stop solution package includes design software, slicing software, furnace and nitrogen generator;
- ◆ Our solution achieves synergy effects for better quality and efficiency.



CUSTOMER VALUE



- ◆ Designed for all scale dental labs
- ◆ Higher powder utilization, lower production cost per unit;
- ◆ Proved machine stability.

EXCLUSIVE
DISTRIBUTOR

Profeta[®] C150

Dedicated Dental Metal 3D Printer
Classical Dental Printer



SINGLE / LASER FOR CoCr

CLASSICAL DENTAL PRINTER (C150)

| | |
|-----------------------|--|
| Building Volume | Φ158 mm, z=70 mm |
| Layer Thickness | 20/50 μm |
| Scanning Speed | 15m/s(max) |
| Productivity | 220 copings/4-4.5 hours 15 RPD frames/3-5.4 hours |
| Laser Type | Yb-fiber laser (Single/Dual), 300W/500W |
| Laser Beam Diameter | 40~60 μm |
| Power | AC220V, 16A 3.5 KW |
| Shielding Gas | Argon/Nitrogen |
| Machine Dimension | 1070*670*1750 mm |
| Weight | 500 kg |
| Operating Temperature | 18~30 °C |
| Materials | CoCr |
| Applicable Products | Copings, RPD frames, implant bar, surgical guide, orthodontic appliance etc. |

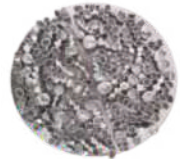
DEDICATED DENTAL METAL 3D PRINTER



- ◆ Single or dual laser as flexible choices for entry level user
- ◆ Larger building volume (Φ158 mm, z=70 mm) for higher production
- ◆ Higher powder utilization
- ◆ Support two printing layer thickness (30/40μm)
- ◆ Proved stability in domestic and global market.

ONE-STOP SOLUTION PACKAGE

- ◆ The one-stop solution package includes design software, slicing software, furnace and nitrogen generator;
- ◆ Our solution achieves synergy effects for better quality and efficiency.



CUSTOMER VALUE



- ◆ Designed for all scale dental labs
- ◆ Higher powder utilization, lower production cost per unit;
- ◆ Proved machine stability.



INTRAORAL SCANNER 3DS V3 PRO

PRODUCT CODE : 02DN



AI Fast Scan



Metal Scan



Fashion &
Light Handpiece



Perfect Integration
with Design
Software



Calibration
Free Scanner



Humanized
Scanner Tip



3D
True Color



Scan body
Smart Matching



Direct USB
Connection



Auto Detection of Caries
Calculus & Plaque

Detachable C-Type Cable

DIGITAL
Chair-side System



SELECT YOUR CASE WORKFLOW



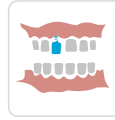
Health Report



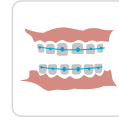
Restoration



Implant



Orthodontics



Scan the patient's upper and lower jaw data and obtain occlusal data near the position of the restoration teeth. Partial area or full mouth data can be scanned as needed.



Agkem Intraoral Scanner has fast and easy image capturing technology, which can provide reliable, accurate & complete data for digital dental impression. Providing patients with a comfortable & efficient treatment experience, our scanners make it easier for dentists to diagnose and communicate with patients.

PRODUCT SPECIFICATIONS

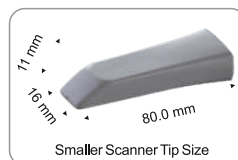
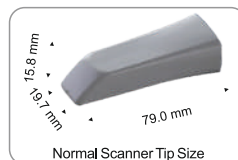


Powderless Model: IOS-11 Real Color Scanning

- | | | | |
|----------------------------|------------------------|----------------------------|---------------------------------------|
| ◆ Scanning Distance | : 0-15mm | ◆ Calibration | : No |
| ◆ Scanner Weight | : 238g | ◆ Operating Time | : >30000hrs |
| ◆ Scanner Light Source | : LED | ◆ Remote Control Function | : Yes |
| ◆ Scanner Size | : 240x49.5x30.5mm | ◆ Data Optimization | : Yes |
| ◆ Imaging Mode | : Synchronous 3D Video | ◆ Export File | : STL, PLY,OBJ |
| ◆ Smaller Scanner Tip Size | : 80x16x11mm | ◆ Image Capture Technology | : Optical continuous video collection |
| ◆ Quick Reset | : Yes | | |

SCANNER TIP

- ◆ 3 Normal Scanner Tip + 1 Smaller Scanner Tip
- ◆ Normal Scanner Tip Size : 79x19.7x15.8mm
- ◆ Tip Sterilized : Sterilized for 100 Times





5-Axis Dental Mill with Disc Changer

DWX-52DCI Plus

PRODUCT CODE : 02GV



| Specifications | | |
|-------------------------------|--|--|
| Millable material | Zirconia, Wax, PMMA, Composite resin, PEEK, Gypsum, Glass fibre reinforced resin, CoCr sinter metal | |
| Loadable workpiece Shape | Disc-type (with step) | Step section: 98.5mm (3.88 in.) (diameter), Height 10mm (0.39 in.) Body section: 95 mm (3.74 in.) (diameter), Height max. 35 mm (1.38 in.) |
| | Pin-type | Pin diameter: 6 mm (0.24 in.) |
| Loadable workpiece weight | 850 g or less | |
| Number of loadable adapters | 6 | |
| Operating speed | XYZ axis: 6 to 1800 mm/min. (0.24 to 70.9 in/min.) | |
| Spindle motor | Brushless DC Motor | |
| Spindle rotating speed | 6,000 to 30,000 | |
| Rotary axis travel angle | A:±360°, B: ±30° | |
| Number of milling burs housed | 15 | |
| Attachable milling bur | Shank diameter:4mm(0.16in.), Length: 40 to 55mm(1.57 to 2.17in.) | |
| Compatible compressed air | 0.02 to 0.2 Mpa | |
| Control command set | RML-1, NC code | |
| Interface | USB | |
| Power requirements | AC 100 V to 240 V ±10% 50/60 Hz (overvoltage category II, IEC60664-1), 2.0 A | |
| Power consumption | Approx. 200 W | |
| Operating noise | During operation: 70 dB (A) or less (when not cutting), During standby: 45 dB (A) or less | |
| External dimension | Width x Depth x Height: 880 x 660 x 600 mm (34.7 x 26.0 x 23.6 in.) | |
| Weight | 105 kg (231.5 lbs) | |
| Installation environment | Indoor use, Altitude:Up to 2,000m (6,562 ft.) Temperature:5 to 40°c (41 to 104°F), Humidity: 35 to 80% (no condensation), Ambient pollution degree:2(as specified by IEC 60664), Short-term temporary overvoltage:1,440V, Long-term temporary overvoltage:490V | |
| Included items | Power cord, USB cable, Manuals, DGSHAPE Software Package CD, Detection pin, Automatic correction jig, Material Adapters, Material Adapter Rack, Pin-type material adapter, Hexagonal driver, Spanner (for spindle), Milling bur holders, Milling bur positioner, Cleaning tool, Option adapter ID labels, Dust Collection hoses, Dust collection hose adapter, Regulator, Cleaning brush, etc. | |



5-Axis DRY Dental Mill

DWX-52D *Plus*

PRODUCT CODE : 02GE



| Specifications | | |
|-------------------------------|-----------------------|--|
| Millable material | | Zirconia, Wax, PMMA, Composite resin, PEEK, PEKK Gypsum, Glass fibre re-inforced resin, CoCr sinter metal, Polycarbonate |
| Loadable workpiece Shape | Disc-type (with step) | Step section: 98.5mm (3.88 in.) (diameter), Height 10mm (0.39 in.) Body section: 95 mm (3.74 in.) (diameter), Height max. 60 mm (2.36 in.) |
| | Pin-type | Pin diameter: 6 mm (0.24 in.) |
| Operating speed | | XYZ axis: 6 to 1800 mm/min. (0.24 to 70.9 in./min.) |
| Spindle motor | | Brushless DC Motor |
| Spindle rotating speed | | 6000 to 30000 rpm |
| Rotary axis travel angle | | A: $\pm 360^\circ$, B: $\pm 30^\circ$ |
| Number of milling burs housed | | 15 |
| Attachable milling bur | | Shank diameter: 4 mm (0.16in), Length: 40 to 55mm (1.57 to 2.17 in.) |
| Compatible compressed air | | 0.02 to 0.2 Mpa |
| Interface | | USB |
| Power requirements | | AC 100 V to 240 V $\pm 10\%$, 50/60 Hz (overvoltage category II, IEC60664-1), 2.0 A |
| Power consumption | | Approx. 200 W |
| Operating noise | During operation | 70 dB (A) or less (when not cutting) |
| | During standby | 45 dB (A) or less |
| External dimensions | | 495 (W) \times 660 (D) \times 600 (H) mm (19.5 \times 26 \times 23.6 in.) |
| Weight | | 67 kg (147.7 lb) |
| Installation environment | | Indoor use, Altitude: Up to 2000m (6562 ft), Temperature: 5 to 40 °C (41 to 104 °F), Humidity: 35 to 80 % (no condensation), Ambient pollution degree: 2 (as specified by IEC 60664-1), Short-term temporary overvoltage: 1440 V, Long-term temporary overvoltage: 490 V |
| Included items | | Power cable, USB cable, Manuals, DGSHAPE Software Package CD, Detection pin, Automatic correction jig, Material Adapter, Material adapter rack, Pin-type material adapter, Hexagonal driver, Spanner (for clamp), Spanner (for spindle), Milling bur holders, Milling bur positioner, Cleaning tool, Option adapter ID labels, Dust collection hoses, Dust collection hose adapter, Regulator, Cleaning brush, etc |

SHINING 3D DENTAL

AUTOSCAN-DS-EX PRO (H)

PRODUCT CODE : 0213



EMBRACE THE 5.0 MP ERA



ULTRA-HIGH ACCURACY

Scan accuracy $\leq 8 \mu\text{m}$ assures reliable scan result, satisfying the requirement of various applications in dental industry completely.



UNPARALLELED DETAILS

Equipped with dual 5.0 MP high resolution cameras, AutoScan-DS-EX Pro(H) can capture every detail of the components meticulously.



OUTSTANDING SCAN SPEED

Bite scan:7S, 1-4Dies/ 5-8Dies:18s/30s, Upper/ Lower jaw scan:14s, Impression scan:66s



FLEXIBLE WORKFLOW

Set up your own workflow as you prefer, increasing work efficiency like never before, all-in-one and triple tray are available to get complete scan data with less steps.

TECHNICAL SPECIFICATIONS

| | |
|-------------------|---|
| Camera Resolution | 2*5.0 MP |
| Accuracy | 8 μm |
| Scan Time | Bite scan: 6.5s; Upper/Lower jaw scan: 14s; 1~4 dies scan: 21.5s; 5~8 dies scan: 25.5s; Impression scan: 31s; |
| Articulator Scan | Support articulator transfer |
| Output Format | STL, PLY, OBJ |
| Light Source | Blue Light |
| Dimensions | 420*260*270 mm |
| Weight | 5.0 Kg |
| Interface | USB 3.0 |
| Power Supply | DC 24V |

SHINING 3D DENTAL

AUTOSCAN-DS-EX PRO (C)

PRODUCT CODE : 02GC



User-friendly Structure

- ◆ Light weight and small footprint: only 5kg
- ◆ Open structure: easy to place different models

ALL IN ONE SCAN

2 STEPS

1

occlusion



2

All in one



FASTER

Single jaw 12s, occlusion 8s; the entire process of scanning a separated model order is 2 minutes, and the entire process of an unseparated model order is 2.5 minutes



PORTABLE

Simplified shape, weight is only 5KG; open design, all-around scanning



COMPATIBLE

Export stl, obj, ply format, high compatibility with current open CAD dental design softwares in the market

HIGH EFFICIENCY, COLOR TEXTURE EASY FOR RPD DESIGN

| | |
|-------------------|--|
| Camera Resolution | 1.3MP |
| Accuracy | < 10 μ m |
| Scan Time | 8s for bite scan; 12s for upper/lower jaw scan; 13s for 1-4 dies scan; 21s for 5-8 dies scan; 58s for impression scan. |
| Dynamic Scan | Articulators are supported, scan head swings by 0~5 de-grees. |
| Output Format | STL, OBJ, PLY |
| Light Source | Blue Light |
| Dimensions | 385*260*270mm |
| Weight | 5kg |
| Interface | USB 3.0 |
| Power Supply | DC 24V |

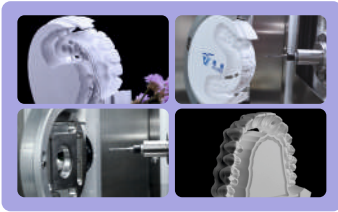
X-MILL 500 PLUS MILLING MACHINE



PRODUCT CODE : 02AQ

A newly developed 5-axis automatic engraving and milling equipment. The high-sealing processing chamber has good dust-proof performance and wide applicability. It can process more materials and quickly cut hard materials such as PMMA/PEEK; it has stronger situational awareness and intelligent monitoring; the door opens and stops automatically, making it safe and worry-free. It is not only a change in appearance design, but also more intelligent, safer, wider applicability, and significantly improved performance.

- ◆ Outstanding Performance
- ◆ Intelligent monitoring
- ◆ Safe operating
- ◆ Speed processing for hard materials
- ◆ New appearance design



| | |
|--------------------------|---|
| Name | X-mill 500 plus |
| Dimension | (L*W*H): 630*730*700(mm) |
| Net weight | Approximately 197 kg |
| Milling Range | XYZ:110/160/80mm A:±35° B:360° |
| Max. Speed | 60,000 rpm |
| Input Voltage | Single Phase AC 220V |
| Axis Quantity | 5 |
| Milling Mode | Dry milling |
| Max feeding Speed | XYZ: 6000 mm/min |
| Bur Changing | Automatic |
| Bur capacity | 8 |
| Spindle Cooling | Water cooling |
| Materials | Zirconia, Wax, PMMA and PEKK, Soft Metal |
| Milling time | Zirconia: 8mins; wax: 3mins; PMMA/PEEK/soft metal: 10mins |
| Spindle Power | 1.2 kw |

X-MILL 500 SE MILLING MACHINE



| | |
|-------------------|--|
| Dimension | 585X530X695(mm) |
| Net weight | 90 kg |
| Milling Range | XYZ:170/120/85mm A : ±30° B :360° |
| Max. Speed | 60,000 rpm |
| Input Voltage | AC 220V |
| No. of Axis | 5 |
| Milling Mode | Dry milling |
| Max Feeding Speed | XYZ: 3000 mm/min |
| Bur Changing | Automatic |
| Bur capacity | 6 |
| Spindle Cooling | Air cooling |
| Materials | Zirconia, Wax, PMMA, PEEK, Soft Metal |
| Milling time | Zirconia: 10mins, Wax: 4mins, PMMA / PEEK / Soft Metal: 10mins |



X-MILL D5 Milling Machine

| | |
|-------------------|--|
| Dimension | 732X520X666(mm) |
| Net weight | 140 kg |
| Milling Range | XYZ: 150/115/93mm A: 360° B: ±30° |
| Max. Speed | 60,000 rpm |
| Input Voltage | AC 220V |
| No. of Axis | 5 |
| Milling Mode | Wet and dry |
| Max Feeding Speed | XYZ: 6000 mm/min |
| Bur Changing | Automatic |
| Bur capacity | 10 |
| Spindle Cooling | Air cooling |
| Materials | Zirconia, Glass ceramic, PMMA, Premill abutment |
| Milling time | Zirconia: 8 mins, Glass ceramic: 20mins, Premill abutment: 25 mins |



600 Milling Center



| | |
|-------------------|--|
| Dimension | 1170X820X1830(mm) |
| Net weight | 920kg |
| Milling Range | XYZ: 320/130/150mm A: 360° B: ±40° |
| Max. Speed | 60,000 rpm |
| Input Voltage | AC 220V |
| No. of Axis | 5 |
| Milling Mode | Wet milling |
| Max Feeding Speed | XYZ: 6000mm/min |
| Bur Changing | Automatic |
| Bur capacity | 16 |
| Spindle Cooling | Water cooling |
| Materials | CoCr, Titanium, PMMA, Wax, Glass ceramics, Hybrid ceramics |
| Milling time | Crown: 30mins, Abutment: 35-50mins, Bar: 2hrs |



630 Milling Center



| | |
|-------------------|---|
| Dimension | 800X650X1750(mm) |
| Net weight | 450kg |
| Milling Range | XYZ:240/180/140mm A : 360° B : ±30° |
| Max. Speed | 60,000 rpm |
| Input Voltage | AC 220V |
| No. of Axis | 5 |
| Milling Mode | Wet and dry |
| Max Feeding Speed | XYZ: 6000 mm/min |
| Bur Changing | Automatic |
| Bur capacity | 24 |
| Spindle Cooling | Water cooling |
| Materials | Titanium, PMMA, Wax, Glass ceramic, Premill abutment |
| Milling time | Glass ceramic: 17mins, Wax: 3mins, Premill abutment: 25mins |

FAST SINTERING FURNACE

Agkem®

PRODUCT CODE : 02KO

Denal Lab Equipment Can Sinter Zirconia Glass Ceramics And Glaze, it is a high-end sintering furnace, which can be used for sintering zirconia ceramics, glass ceramics and glazes.



Model: F2 Fast Sintering Furnace

- ◆ **Max. Temperature** : 1650°C
- ◆ **Max. Heating Rate** : 100°C/Min
- ◆ **Heating Element** : Silicon Molybdenum Bar
- ◆ **Temperature Control accuracy** : ±1°C
- ◆ **Temperature Controller** : Separate touch screen, 20-segment programmable Very easy and simple operation
- ◆ **Operation** : Manual
- ◆ **Furnace's size** : 420*320*600mm (smaller & lighter)
- ◆ **Rated voltage** : Interflow 220 VAC±20%
- ◆ **Rated Power** : 2500w

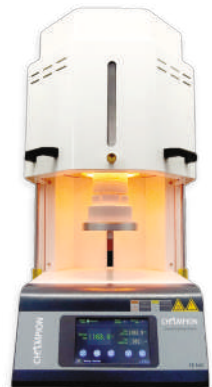
CHAMPION SINTERING FURNACES

CHAMPION
Equipments

PRODUCT CODE : 022S

Model: ZTCF-30B Plus-Fast Sintering

- ◆ **Fast Sinter** : 2 hour (including heating, heat hold, and cooling), 80 units crowns
- ◆ **Conventional sinter** : 3 layers of crucible, 150 units
- ◆ **Max. Temperature** : 1730°C
- ◆ **Temperature control accuracy** : ±1°C
- ◆ **Touch Screen** : 7 " TFT
- ◆ **Max power consumption** : 3 KW
- ◆ **Power Supply** : 220 V 50/60 HZ & 110 V 50/60 HZ
- ◆ **Heating element** : High purity heater specially for dentistry
- ◆ **Capacity** : Ø 110 ×120 mm
- ◆ **Conventional sintering program** : No.1
- ◆ **Rapid sintering program** : No.2
- ◆ **Cleaning program** : No.40
- ◆ **Program** : 40 programs can be stored, with power-off memory function
- ◆ **Size (L*W*H)** : 450× 500× 850 mm³
- ◆ **Net weight** : 85 KG



19

SINTERING FURNACE

PRODUCT CODE : 02GD



Model: ZTCF-30B Mini Box Furnace

- ◆ Max. Temperature : 1730°C
- ◆ Temperature control accuracy : $\pm 1^{\circ}\text{C}$
- ◆ Touch screen : 7" TFT
- ◆ Power Output : 3 KW
- ◆ Electrical connected value : 220 50/60 HZ & 110 V 50/60 HZ
- ◆ Heating element : High purity heater specially for dentistry
- ◆ Sensor : Type B
- ◆ Capacity : $\varnothing 110 \times 120 \text{ mm}$
- ◆ Conventional sintering program: No.1
- ◆ Cleaning program : No.40
- ◆ Program : Stored 40 programs, with power-off memory function
- ◆ Size (L*W*H) : 450× 500×850 mm 3
- ◆ Net weight : 60 KG

OIL FREE/LOW NOISE AIR COMPRESSOR

Model: MEDI+Air-850 PRODUCT CODE : 022J

- ◆ Noise : 55 db
- ◆ Tank : 35 L
- ◆ Capacity : 156 L/Min
- ◆ V/Hz : 220V/50Hz
- ◆ Power : 850 W
- ◆ Weight : 30 kg
- ◆ Size : 440 x 440 x 570 L/Min
- ◆ Pressure : 6-8 bar
- ◆ HP : 1.10



COMPRESSOR WITH DESICANT AIRDRYER



Model: RP03

- ◆ Fitted with 12 cfm desiccant Air dryer and all standard Accessories.
- ◆ Available in 60 Liters tank size.
- ◆ Flow rate 300LPM Maximum Pressure 8 Bar
- ◆ Power 3HP 230V~50Hz (simultaneous on)

PRODUCT CODE : 01KD

Porcelain Furnace temperature control is accurate, the internal temperature of the furnace is uniform, the automatic lifting tray design has good sealing performance, and it is equipped with a low-noise oil-less vacuum pump. Porcelain Furnace is suitable for all kinds of ceramic powder on the market, such as SHOFU, IVOCLAR, VITA, NORITAKE, etc.

Model: ZTCF-20B, Ceramic Furnace with Vacuum Pump

- ◆ **Max. Temperature** : 1300°C
- ◆ **Max. Vacuum** : -98 Kpa
- ◆ **Heating wire** : Long lifetime heating wire
- ◆ **Heating rate** : ≤140°C/min
- ◆ **Temperature control accuracy** : ±1°C
- ◆ **Maximum Power Consumption** : 1600 W
- ◆ **Power supply** : 220 V 50/60 HZ
- ◆ **Chamber Size** : Ø 100 mm×70 mm
- ◆ **Number of program memories** : 100 programs (Can extend to 500 programs)
- ◆ **Size (L*W*H)** : 380*320*610 mm³
- ◆ **Net weight** : 23 KG



Features

- ◆ Equipped with a heating wire with a long service life, and the heating is even and no pollution;
- ◆ Has Stored SHOFU, IVOCLAR, VITA and NORITAKE ceramic powder programs, operator can according brand of ceramic powder to choose the program;
- ◆ PID intelligent temperature control system ensures the high temperature control accuracy. The temperature error at ±1°C; ;
- ◆ Equipped with high sensitive sensor ensures vacuum measurement accurate ;
- ◆ Equipped with low-noise oil-free vacuum pump, has great vacuum value, almost don't need to service;
- ◆ Large-size and touch screen display all the date ;
- ◆ Unique vacuum pipeline filter design ensures the long life of internal electrical components;
- ◆ New environmental thermal insulation material with good thermal insulation performance ensures a stable chamber temperature.

EXTRACTION UNIT FOR CAM SYSTEMS

PRODUCT CODE : 02GX



silent



compact

Advantages

- ◆ Bi-directional communication between extraction unit and CAM unit thanks to the PLC interface.
- ◆ Low operating noise of max. 55 dB (A)
- ◆ 3x longer service life in comparison to conventional collector motors (1000 operating hours guaranteed).

Details

- ◆ No follow-up costs due to bag-free dust collection.
- ◆ Working without interruption due to uncomplicated motor change within minutes.

Technical data

- ◆ Power consumption : 490 W (230 V) | 460 W (220 V) | 480 W (120 V) | 480 W (100 V)
- ◆ CAM interface : RJ 45 socket
- ◆ Number of suction hoses : 1
- ◆ Sound pressure level (LpA) (at max. volume flow) : 55 dB (A)
- ◆ Weight (empty) : ~13,2 kg // ~29.1 lbs

Intelligent connection of the extraction unit and CAM unit also available

The interface ensures that your CAM unit and our extraction unit understand each other perfectly: up to 8 signals can be exchanged between them. For example, the Renfert CAM extraction units can indicate to your milling device when a filter is due to be changed.



PRODUCT CODE : 02QY

Saturn 4 (12K)

PRODUCT CODE : 02NV

ELEGOO



Specification

- ◆ XY Resolution: 11520*5120 (19×24μm)
- ◆ Build Volume: 218.88×122.88×260 mm
- ◆ COB + Fresnel Collimating Lens
- ◆ Auto Leveling & Intelligent Mechanical Sensor
- ◆ User-Friendly Structure & Advanced Cooling System
- ◆ Large Print Size of 218.88×122.88×220 mm³
- ◆ 3.5-inch Resistive Touch Screen
- ◆ 9H hardness tempered glass
- ◆ MAX 70mm/h Printing Speed

Saturn 3 Ultra (12K)

PRODUCT CODE : 021P

Specification

- ◆ XY Resolution: 11520*5120 (19×24μm)
- ◆ Build Volume: 218.88×122.88×260 mm
- ◆ Motherboard System: Linux
- ◆ Printing Speed: Up to 150mm/h
- ◆ Touch Screen: IPS Capacitive Touch Screen
- ◆ Z-axis: Ball Screw+ Dual Linear Rails
- ◆ Release Film: ACF Release Film
- ◆ File Transfer: Wifi, USB
- ◆ Light Source: COB+ Refractive Light Source
- ◆ Leveling Method: 4-point Leveling
- ◆ Slicing Format: Open-source GOO Format
- ◆ Screen Protector: 9H Tempered Glass
- ◆ Air Purifier: Supported
- ◆ Others: A reserved USB socket; Adjustable foot pads



DUAL FUNCTION OF WASHING AND CURING

ELEGOO

PRODUCT CODE : 021Q

Specification

- ◆ 360° all-round exposure
- ◆ Large washing volume of 7000ml
- ◆ Easy and intuitive operation
- ◆ UV Protection Cover
- ◆ Mercury XS Wash Machine Size:
255mm*155mm*385.5mm
- ◆ Maximum Wash Volume
(with platform)180mm*121mm*153mm
(without platform)201mm*124mm*255mm
- ◆ Mercury XS Cure Machine Size:
246mm*230mm*363.5mm



Standard Photopolymer Beige & Grey Resin



Color:
Beige



Color:
Grey

Features

- ◆ Low Shrinkage and High Precision
- ◆ Fast Curing and Great Stability
- ◆ Bright and Stunning Colors

Specification

- ◆ **Material:** Polymer Resin
- ◆ **Form:** Liquid
- ◆ **Compatible With:** All LCD / MSLA / DLP 3D Printers
- ◆ **Hardness:** 84 D; Shrinkage: 7.1 %

Dental Castable UV Resin

Features

- ◆ High Precision
- ◆ Low contraction / viscosity
- ◆ Stable and fast healing

Specification

- ◆ **Solidification by wavelength:** 385 to 410 nm
- ◆ **Density:** 1.05 - 1.25 g/cm³;
- ◆ **Shore hardness:** 85 - 88 D;
- ◆ **Viscosity (25°C):** 50 - 170 mPa.s;



LAB BRUSHLESS MOTOR



PRODUCT CODE : 0070

DESKTOP TYPE STRONG TORQUE AT LOW SPEED VERTICAL / HORIZONTAL PLACEMENT



Model: Oz Black

- ◆ RPM : max 50,000 rpm
- ◆ Torque : 7.8 N. cm
- ◆ Input : 100-120, 220, 240V (50/60 Hz)
- ◆ Output : 230V
- ◆ Right & Left turning ability
- ◆ Hand/Foot speed control system
- ◆ Self-diagnosis, Error display, work memory

BEST TORQUE, BEST PRACTICAL

PRODUCT CODE : 0151

Model: Forte 400P

- ◆ RPM : 50,000 rpm
- ◆ Torque : 7.6 N. cm
- ◆ Brushless High Performance Handpiece
- ◆ Powerful Torque Type
- ◆ Overload Scanning System
- ◆ Simple-Easy Operation



LAB BRUSH MOTOR

PRODUCT CODE : 007L

NON STAGE SPEED SYSTEM WITH HIGH TORQUE UNIQUE DESIGN, HANDPIECE HOLDER



Model: Strong 210/105L

- ◆ RPM : max 40,000 rpm
- ◆ Torque : 270 gf. cm with 105L
- ◆ Input : 100, 110/320, 240V (50/60 Hz)
- ◆ Output : DC0-32V
- ◆ Right & Left turning ability
- ◆ Foot speed control
- ◆ Foot speed pedal and foot on/off pedal option

LAB BRUSH MOTOR



PRODUCT CODE : 00EC

BASIC MODEL, MINI-COMPACT DESIGN LESS VIBRATION STANDARD CARBON BRUSH MOTOR



Model: Strong 204S/102L

- ◆ RPM : max 40,000 rpm
- ◆ Torque : 280 gf. cm
- ◆ Input : 100, 110/320, 240V (50/60 Hz)
- ◆ Output : DC0-32V
- ◆ Right & Left turning ability
- ◆ Foot on/off switch

PRODUCT CODE : 01XG

Model: Strong 204S/105L

- ◆ RPM : max 40,000 rpm
- ◆ Torque : 280 gf. cm
- ◆ Input : 100, 110/320, 240V (50/60 Hz)
- ◆ Output : DC0-32V
- ◆ Right & Left turning ability
- ◆ Foot on/off switch



SURVEYOR

MORE PRECISE WORK IS POSSIBLE WITH THE EXCLUSIVE HANDPIECE

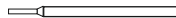


- ◆ High quality precision instrument for milling, drilling setting attached models and tapping
- ◆ Smooth and micro-fit arm
- ◆ Surveyor holder using for Exclusive handpiece (Strong 102LSII)

Wax trimmer



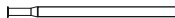
0 Tapper tool



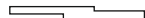
6 Tapper tool



20 gage



Carbon marker sheath



2 tapper tool

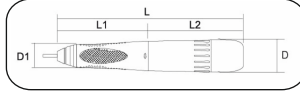


PRODUCT CODE : 00Q6

Model: Forte 100 Q III



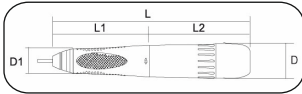
- ◆ RPM : 50,000
- ◆ Weight : 254 g
- ◆ Dimensions : L-171, L1-81, L2-90, D-29, D1-19



PRODUCT CODE : 02E7

Model: Forte 100 IIP

- ◆ RPM : 50,000
- ◆ Weight : 225 g
- ◆ Dimensions : L-165, L1-81, L2-84, D-28, D1-19



PRODUCT CODE : 006Z

Model: Strong 105L

- ◆ RPM : 40,000
- ◆ Weight : 190 g
- ◆ Dimensions : L-153, L1-80, L2-73, D-29, D1-15



PRODUCT CODE : 006W

Model: Strong 102L

- ◆ RPM : 40,000
- ◆ Weight : 200 g
- ◆ Dimensions : L-152, L1-79, L2-73, D-29, D1-15



PRODUCT CODE : 006X

Model: Strong 102LS II

- ◆ RPM : 40,000
- ◆ Weight : 200g
- ◆ Dimensions : L-152, L1-79, L2-73, D-29, D1-15



STAR ST HIGH STRENGTH AND TRANSLUCENCY

- ◆ STAR ST blanks are made from biocompatibility zirconiumdioxide.
- ◆ The yttrium oxide stabilizing projects the material against cracks and increase the tensile and compressive strength.
- ◆ The special grain size allocation inside the material and the added aluminum oxide also result in extra strength during milling and subsequently in clinical use.
- ◆ The outstanding mechanical characteristics, excellent chemical durability and the unbeaten biocompatibility.
- ◆ Combined with the translucent color predestine STAR ST as the ideal material provider for dental milling systems.



Translucency: 43%

Strength: 1250Mpa



Available in Sizes

ST 98 x 10mm

ST 98 x 12mm

ST 98 x 14mm

ST 98 x 16mm

ST 98 x 18mm

ST 98 x 20mm

ST 98 x 22mm

ST 98 x 25mm

| Items | ISO10993 Standards Requirements | Test results |
|------------------------------|---------------------------------|------------------------|
| Cytotoxicity test | Cytotoxicity <=1 | No cytotoxicity |
| Sensitization test | Sensitization test not allowed | No sensitization |
| Oral mucosa irritation test | Irritation not allowed | No stimulation |
| Acute systemic toxicity test | Sensitization not allowed | No acute oral toxicity |
| Genotoxicity test | Avirulent | AMES test: negative |

STAR ST PRESHADED ZIRCONIA



STAR ST HIGH TRANSLUCENCY, APPLY TO ANTERIOR AND POSTERIOR TEETH, FULL CONTOUR AND ALL KINDS OF BRIDGES.

The ST High blank is non-toxic and non-radioactive with excellent biological properties, teeth color is like the real teeth with good permeability and aesthetics. It is with high strength, good toughness and excellent wear resistance, X-cera pre-shaded ST blanks is the raw material with excellent property for making crowns.



- ◆ **Indications** : Veneers, anterior crown/coping, bridge
- ◆ **Shades** : Shofu color Halo/Pro
- ◆ **Sintering curve** : Room temperature → 10°C/min to 900°C (preserve for 30min) → 3.5°C/min to 1530°C (preserve for 2h) → 12°C/min to 800°C → follow the furnace cooling to room temperature

Translucency: 43%

Strength: 1250Mpa

Available in Sizes

ST 98 x 10mm

ST 98 x 12mm

ST 98 x 14mm

ST 98 x 16mm

ST 98 x 18mm

ST 98 x 20mm

ST 98 x 22mm

ST 98 x 25mm

Ordering Information:

STAR ST PRESHADED ZIRCONIA

| | | | |
|----|----|----|------|
| A1 | A2 | A3 | A3.5 |
| A4 | B1 | B2 | C1 |
| C2 | C3 | D2 | D3 |

| Items | ISO10993 Standards Requirements | Test results |
|------------------------------|---------------------------------|------------------------|
| Cytotoxicity test | Cytotoxicity ≤1 | No cytotoxicity |
| Sensitization test | Sensitization test not allowed | No sensitization |
| Oral mucosa irritation test | Irritation not allowed | No stimulation |
| Acute systemic toxicity test | Sensitization not allowed | No acute oral toxicity |
| Genotoxicity test | Avirulent | AMES test: negative |

STAR SHT MULTI LAYER ZIRCONIA BLANK



**STAR SHT MULTI LAYER SUPER-HIGH TRANSLUCENCY,
APPLY TO ANTERIOR**

Available in Sizes

SHT MULTI LAYER 98 x 10mm

SHT MULTI LAYER 98 x 12mm

SHT MULTI LAYER 98 x 14mm

SHT MULTI LAYER 98 x 16mm

SHT MULTI LAYER 98 x 18mm

SHT MULTI LAYER 98 x 20mm



Ordering Information:

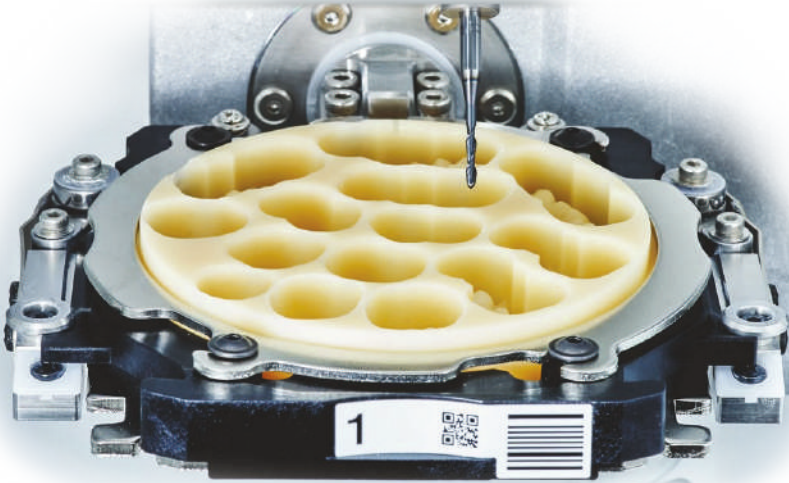
STAR SHT MULTI LAYER ZIRCONIA

A2

A3

| Layer | Proportion | Vickers Hardness (HV) | Strength (MPa) | Color | Translucency |
|---------|------------|-----------------------|----------------|---------|--------------|
| Layer-1 | 30% | ≥ 1300 | ≥ 1050 | Shallow | 49% |
| Layer-2 | 15% | | | ↓ | |
| Layer-3 | 15% | | | | |
| Layer-4 | 20% | | | | |
| Layer-5 | 20% | | | | |

| Projects | Detection Result |
|---------------------|------------------------|
| Sintering Density | ≤ 6.0g/cm ³ |
| Bending Strength | ≤ 1050Mpa |
| Vickers Hardness | 125HV |
| Chemical Solubility | ≤ 100ug/m ² |



Available For

Roland Milling Machine
 VHF Milling Machine (K3, K4)
 Arum Milling Machine
 XTCERA Milling Machine

BUR HEAD SIZE

- ◆ 0.6, 1, 2 mm Head

DC Bur For (ROLAND, VHF, ARUM, XT CERA) Milling Machine



Features

- ◆ Exceptionally sharp edge, preventing chipping & cracks of teeth
- ◆ Compatible with Zirconia
- ◆ Long life span
- ◆ Minimum risk of bur cracking due to the high tenacity

DLC Bur For (ROLAND, VHF, ARUM, XT CERA) Milling Machine



Features

- ◆ Exceptionally sharp edge, preventing chipping & cracks of teeth
- ◆ Compatible with Zirconia
- ◆ Minimum risk of bur cracking due to the high tenacity
- ◆ Long life span
- ◆ High hardness and coating adhesion

STAR POLVERE POWDER



Star polvere is a CoCr dental alloy powder with improved properties for the production of dentures in the laser melting process

Composition in percent by mass:

| | |
|----|-------|
| Co | 63.9% |
| Cr | 24.7% |
| W | 5.4% |
| Mo | 5.0% |
| Si | 1.0% |

Packing : 5 kg



FUSION AM POWDER



Fusion AM is a CoCr dental alloy powder with improved properties for the production of dentures in the laser melting process.



Composition in percent by mass:

| | |
|-----------|-------|
| Co | 63.9% |
| Cr | 24.7% |
| W | 5.4% |
| Mo | 5.0% |
| Si | 1.0% |
| C,Fe,Mn,N | <1% |

Packing : 5 kg

MESA-MAGNUM CERAMIC S



One of the first produced by MESA

- ◆ Approved by technicians around the world for over 35 years
- ◆ Excellent mechanical properties
- ◆ Excellent polishing and compactness
- ◆ High compatibility with various aesthetic coatings

Composition in %:

Nickel (Ni) 65% Chrome (Cr) 24%
Molybdenum (Mo) 10%
Silicon (Si) 1%

STARBOND +

without
BERYLIUM

NICKEL BASED DENTAL ALLOY FOR CERAMIC

Composition

| Ni | Cr | Mo | Si | other |
|----|----|----|-----|-------|
| 64 | 24 | 10 | 1.5 | 0.5 |



STARBOND NB

with
BERYLIUM

A High Strength Nickel chrome with Beryllium Alloy for Superior Bond Strength



STARBOND NB

Composition

| | |
|-------|--------|
| Ni | 76% |
| Cr | 15% |
| Mo | 5% |
| Be | 1.7% |
| Al | 2% |
| other | 3% Max |

SUNVEST

Dental Investment Material
for Crown & Bridge

Net Weight:
400g / Pouch

Carton Contains:
30 Pouches
& 3 ltr Liquid

Mixture Ratio
Powder : Liquid
100 gm 24-25 ml



STARVEST

Dental Investment Material
for Partial Denture

Net Weight:
400g / Pouch

Carton Contains:
50 Pouches and
4 ltr Liquid

Mixture Ratio
Powder : Liquid
100 gm 22-23 ml



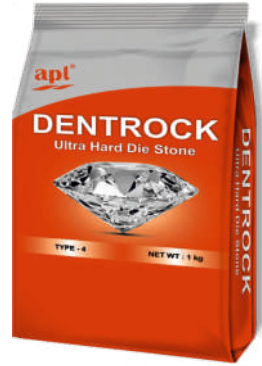
DENTROCK ULTRA HARD DIE STONE (TYPE-4)



- ◆ Very low expansion
- ◆ Splintering resistant
- ◆ Excellent casting under vibration
- ◆ Abrasion resistant
- ◆ High compressive strength

Dent Rock is an extra hard stone with high compressive strength, recommended for making master models for fixed prostheses.

Packaging:
1 kg pack x 15 pcs.



SNOW ROCK ULTRA HARD DIE STONE (TYPE-4)



DIE STONE With Superior Quality

- Low setting expansion: 0.09%
- Glass-like accurate surface and beautiful color
- Excellent edge stability
- Available in color : Golden Brown, Green, Grey
- **Packaging:**
(1.5 kg Alu. pack x 12) - 18 kg

DIE STONE EXTREME TYPE-4 (DIE STONE GOLD)



SPECIAL FORMULA FOR IMPLANT & CAD/CAM

Super precision innovative Nano Technique silky surfaces with brilliant color ultra hard strength

- Low setting expansion: 0.07%
- Silky surfaces with brilliant color
- Good Scanability & Extremely Low roughness
- Innovative Nano Technique
- Available in color : Golden Brown
- **Packaging:**
(1.5 kg Alu. pack x 8) - 12 kg



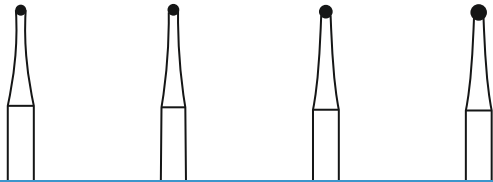
CARBIDE BURS



High quality tungsten carbide lab burs with rapid cutting and smooth trimming of porcelain castings high performing burs with exceptionally long lifetimes. These include the unique soldering technique of carbide fill head to shank unlike other burs in market with Carbide head and steel shank In addition, we achieve perfect concentricity resulting in smoother, vibration-free running.



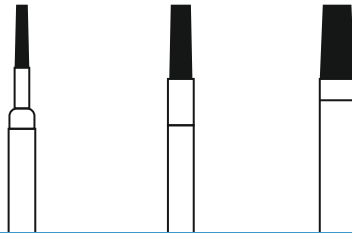
Round Bur



4 6 8 9



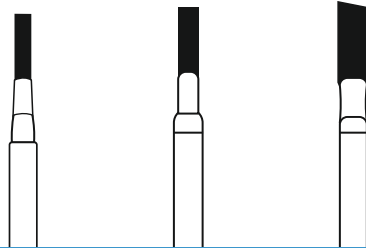
Square Cylinder



701 702 703



Cross-Cut Square Cylinder



557 558 559



Compatibility: Smaller rotary tools.
Shank diameter: 3mm (about 1/8").
Shank Length: 35mm. From right to left direction of cutting uniform movement, not like the use of wheel for reciprocating cutting.

CUTTING DISCS



SEPARATING AND GRINDING DISK FOR METAL AND CERAMIC WORKING.



CUTTING DISCS

- ◆ Non-Pollutant
- ◆ Absolutely heatless
- ◆ For precise cutting of ceramics and precious alloy.
- ◆ Medium fine grit size

Available Size:

Cutting Discs
(D32 x 2.2 mm),
(D38 x 0.7 mm),
(D38 x 1.0 mm)

Packing: 100 pcs/box

ARGON WHEELS & POINTS



Size
7/8 * 1/4 inch



Size
7/8 * 1/4 inch



Size
5/8 * 1/16 inch



Size
7/8 * 1/4 inch



Packaging: 100 pcs box
Suggested Speed: 30,000 rpm

- ◆ For polishing of semi precious alloys & metals of silicone carbide.
- ◆ For Pre-refing, Polishing, Smoothing
- ◆ Suitable for Chrome-Cobalt Alloy, semi-precious & titanium alloys



Model: Dental Procelain Furnace

- ◆ Double vacuum operation
- ◆ Crystallization
- ◆ Tempering over zirconia
- ◆ Auto vacuum calibration
- ◆ Max. Temperature : 1200°C
- ◆ Max. firing temperature : 1180°C
- ◆ Temperature ramp. : 1 to 120°C
- ◆ Programs : 200
- ◆ Acoustic signal : ✓
- ◆ Weight : 13.5 kg
- ◆ Width x Height x Depth (cm) : 23x57x24
- ◆ USB port connection : ✓
- ◆ Acoustic signal : ✓
- ◆ Cylindrical firing chamber : 95mm x 65mm

Solidilite V, the new generation indirect light curing unit features a compact, user friendly, sturdy yet ergonomic design with an integrated fan and a protective soft start cure made to optimize efficient light polymerization of indirect composite such as CERAMAGE.

Model: Solidilite 250V

- ◆ Dimensions : W 230mm x D 252mm x H 354mm
- ◆ Weight: approx : 9.5 kg
- ◆ Supply voltage : 200 V-240 V, 50/60 Hz
- ◆ Fuse : 2 x 3.15 A time-lag
- ◆ Lamp : 4 JCR 110V 150 W halogen lamps
- ◆ Spectral range : 400-550 nm
- ◆ Solidilite : 250 V



Sublite V is an easy to operate, hand activated temporary light curing unit with an integrated fan designed for initial or pre-polymerization of the indirect composite during build up of the restoration, without the need to remove the restoration from the model.

Model: Sublite V

- ◆ **Dimensions** : W 112mm x D 210mm x H 252mm
- ◆ **Weight: approx** : 2.5 kg
- ◆ **Supply voltage** : 200 V-240 V, 50/60 Hz
- ◆ **Fuse** : 2 x 1.6 A time-lag
- ◆ **Lamp** : 1 JCR 110V 150 W halogen lamp
- ◆ **Spectral range** : 400-550 mm



A compact condenser designed for easy and reliable porcelain condensation during porcelain veneering of all-ceramic and metal-based restorations.

Ultrasonic condensing of the moist porcelain buildup firing.



Model: Ceramosonic S Condenser

- ◆ **Power supply:** : AC 100-240 V \pm 10 % & 50/60 Hz
- ◆ **Dimension** : 160 (W) x 140 (D) x 110 (H) mm

VINTAGE PRO



VINTAGE PRO BODY



Ordering Information:

VINTAGE HALO BODY 50g

| | | | | | |
|-----|-----|-----|-------|-----|-----|
| A1B | A2B | A3B | A3.5B | A4B | B1B |
| B2B | B3B | B4B | C1B | C2B | C3B |
| C4B | D2B | D3B | D4B | | |

VINTAGE HALO BODY 200g

| | | | | | |
|-----|-----|-----|-------|-----|-----|
| A1B | A2B | A3B | A3.5B | A4B | B1B |
| B2B | B3B | B4B | | | |

VINTAGE PRO OPAQUE PASTE

Ordering Information:

VINTAGE PRO Opaque Paste 6g

| | | | | | |
|------|-----|-----|-----|-----|-------|
| Base | | A1O | A2O | A3O | A3.5O |
| A4O | B1O | B2O | B3O | B4O | C1O |
| C2O | C3O | C4O | D2O | D3O | D4O |



VINTAGE PRO BASE/SHADE OPAQUE POWDER

Ordering Information: VINTAGE PRO Paste opaque 50g



| | | | | | |
|------|-----|-----|-----|-----|-------|
| Base | | A1O | A2O | A3O | A3.5O |
| A4O | B1O | B2O | B3O | B4O | C1O |
| C2O | C3O | C4O | D2O | D3O | D4O |

VINTAGE PRO INCISAL/STANDARD ENAMEL



- ◆ A layer of translucent powder is recommended to be used along with standard enamel to give a more natural appearance.

Ordering Information:

VINTAGE PRO Opal Enamel 50g and 200g

| SHADE | 57 | 58 | 59 | 60 |
|-------|----|----|----|----|
|-------|----|----|----|----|



VINTAGE PRO GUM



The PRO GUM porcelain offers an excellent range and armamentarium to best replicate gingival shades as close to the remaining natural gingiva thus enhancing the overall aesthetics of the restoration.

Ordering Information:

VINTAGE PRO ADD-ON 50g

| SHADE | LP | DP |
|-------|----|----|
|-------|----|----|

VINTAGE MIXING LIQUID HC

LIQUID SYSTEM

- ◆ The VINTAGE Mixing Liquid HC provides an ideal consistency and improves the overall handling properties of all porcelain powders.

Ordering Information:

VINTAGE MIXING LIQUID HC

| QTY | 50 ML | 500 ML |
|-----|-------|--------|
|-----|-------|--------|



VINTAGE PRO POWDER OPAQUE LIQUID



- ◆ The VINTAGE PRO Powder Opaque Liquid is a water based medium which improves the overall workability when mixed along with the PRO opaque powder while masking the Inner metal Coping.

Ordering Information:

VINTAGE PRO POWDER OPAQUE LIQUID

| QTY | 50 ML | 500 ML |
|-----|-------|--------|
|-----|-------|--------|

VINTAGE
Halo



VINTAGE HALO BODY

Ordering Information:

VINTAGE HALO BODY 50g

| | | | | | |
|-----|-----|-----|-------|-----|-----|
| A1B | A2B | A3B | A3.5B | A4B | B1B |
| B2B | B3B | B4B | C1B | C2B | C3B |
| C4B | D2B | D3B | D4B | | |



VINTAGE HALO BODY 200g

| | | | | | |
|-----|-----|-----|-------|-----|-----|
| A1B | A2B | A3B | A3.5B | A4B | B1B |
| B2B | B3B | B4B | | | |

VINTAGE HALO INCISAL / STANDARD ENAMEL

Ordering Information:

VINTAGE HALO INCISAL /
STANDARD ENAMEL 50g & 200g

| SHADE | 57 | 58 | 59 | 60 |
|-------|----|----|----|----|
|-------|----|----|----|----|



VINTAGE HALO OPAQUE LIQUID



The VINTAGE Halo Opaque Liquid is a water based medium which improves the overall workability when mixed along with the Halo opaque powder while masking the inner metal coping.

Ordering Information:

VINTAGE HALO OPAQUE LIQUID

| QTY | 50 ML | 500 ML |
|-----|-------|--------|
|-----|-------|--------|



VINTAGE HALO PAINT OPAQUE LIQUID

The VINTAGE Halo Paint Opaque Liquid is an oil based medium which creates an Ideal Paste like viscosity when mixed with Halo Opaque Powder thus enhancing the handling properties of the porcelain Powder.



Ordering Information:

VINTAGE HALO PAINT OPAQUE LIQUID

| | | |
|-----|-------|--------|
| QTY | 50 ML | 350 ML |
|-----|-------|--------|

VINTAGE AL/ZR OPAQUE LINER LIQUID



The AL/ZR opaque liner liquid is used to adjust the viscosity of the ZR Opaque Liner paste aiding uniform application over the coping in thin layers.

Ordering Information:

VINTAGE AL/ZR OPAQUE LINER LIQUID

| | |
|-----|------|
| QTY | 3 ML |
|-----|------|

VINTAGE MP BASE/SHADE OPAQUE PASTE

Ordering Information:

VINTAGE MP OPAQUE PASTE 5g

| | | | | | |
|------|-----|-----|-----|-----|-------|
| Base | | A10 | A20 | A30 | A3.50 |
| A40 | B10 | B20 | B30 | B40 | C10 |
| C20 | C30 | C40 | D20 | D30 | D40 |





VINTAGE ZR OPAQUE LINEAR PASTE

Ordering Information:

VINTAGE ZR OPAQUE LINER PASTE 5g

| | | | | | |
|-----|-----|-----|-------|-----|-----|
| A10 | A20 | A30 | A3.50 | A40 | B10 |
| B20 | B30 | B40 | C10 | C20 | C30 |
| C40 | D20 | D30 | D40 | | |



VINTAGE ZR BODY / ENAMEL



Ordering Information:

VINTAGE ZR BODY / ENAMEL 50g

| | | | | | |
|-----|-----|-----|-------|-----|-----|
| A1B | A2B | A3B | A3.5B | A4B | B1B |
| B2B | B3B | B4B | C1B | C2B | C3B |
| C4B | D2B | D3B | D4B | | |

| | | | |
|-------|---------|---------|---------|
| SHADE | OPAL 55 | OPAL 56 | OPAL 57 |
| | OPAL 58 | OPAL 59 | OPAL 60 |

VINTAGE ZR GUM

Ordering Information:

VINTAGE ZR GUM

| |
|--------------------|
| AVAILABLE IN 15g |
| GUM DP - DARK PINK |
| GUM LP - LITE PINK |



VINTAGE ART GLAZE PASTE



Ordering Information:

VINTAGE ART
GLAZE PASTE 3g



VINTAGE ART SHADE STAINS



Ordering Information:

VINTAGE ART SHADE STAINS

- ◆ AS - A Shade
- ◆ BS - B Shade
- ◆ CS - C Shade
- ◆ DS - D Shade

VINTAGE ART BASE COLOUR STAINS

Ordering Information:

VINTAGE ART BASE COLOR STAINS 3g

| | | |
|------------|------------|-----------|
| P - Pink | Y - Yellow | BL-Blue |
| O - Orange | V - Violet | G - Green |
| B - Black | W - White | G - Gray |



VINTAGE ART STAIN LIQUID



Ordering Information:

VINTAGE ART STAIN LIQUID

PACKAGING 50 ML

CERAMAGE POLISHING KIT



Packaging :

The Kit Contains:-

- ◆ Robot Carbide fissure bur HP
- ◆ Silicone Points HR2 each of 11, 13S & 2pc of 28
- ◆ SHOFU Pivot Brush x 1
- ◆ SHOFU Pivot Brush SC x 1
- ◆ SHOFU Mandrels x 2

CERAMAGE MODELLING LIQUID

Ordering Information:

VINTAGE MODELLING LIQUID

| | | | |
|------------------|-------------|------------|-------------|
| PACKAGING | 6 ML | PIN | 1991 |
|------------------|-------------|------------|-------------|



CERAMAGE SPACER AND SEP



Ordering Information:

CERAMAGE SPACER & SEP

| PACKAGING | PIN |
|---------------|------|
| Spacer 7ml | 1994 |
| Separator 7ml | 1993 |

CERAMAGE OXY BARRIER

Ordering Information:

CERAMAGE OXY-BARRIER

| | | | |
|------------------|--------------|------------|-------------|
| PACKAGING | 10 ML | PIN | 1992 |
|------------------|--------------|------------|-------------|



CERAMAGE FLOWABLE



Available in 12 Shades :

| | | | |
|-----------|----------|----------|---------|
| F-OD A3 | F-A3B | F-ROOTAB | F-59 |
| F-T-GLASS | F-CT | F-BT | F-BR |
| F-W | F-GUM-BR | F-GUM-V | F-GUM-R |

Ordering Information: CERAMAGE FLOWABLE

CERAMAGE GUM

Available in 3 types :

- GUM - L : Lite Pink
- GUM - D : Dark Pink
- GUM - OR : Orange



Ordering Information:
CERAMAGE GUM

VINTAGE SHADE GUIDE



Packaging:

Available as porcelain
& resin type.

PROCELAIN BRUSHES

Ordering Information:

PORCELAIN BRUSHES

Packaging:

Porcelain Brush Set contains Brushes x 6 (No. OP0, No.P3, No.P5, No.P7, No.S0, No.S1)



REFILL BRUSHES ARE INDIVIDUALLY PACKED



Packaging:

| | |
|---------|----------|
| No. P-5 | No. OP-0 |
| No. P-7 | No. S1 |
| No. P3 | |



MUMBAI OFFICE

412, 4th Floor Plot No.X21, MIDC Cross Road 21,
Marol Industrial Area, Andheri East, Mumbai
Mob.: 9870717217 E-Mail:sachinrodge@agkem.com

AHMEDABAD OFFICE

Shade No 74, Sankalp insutrial state, Nr. S.P. Ring
Road Nana Chiloda Ahmedabad-382330
Mob.:8000101128 E-Mail:ahmedabad@agkem.com

KOLKATA OFFICE

Ground Floor, Opposite of SP office Singur, Singur
Natanbazar, Hooghly, West Bengal-712409
Mob.:9874518136 E-Mail:sales.kolkata@agkem.com

GREATER NOIDA OFFICE

Site no - 4, d-11, kansa industrial area, greater Noida,
Gautam Buddha Nagar, Uttar Pradesh, 201308
Ph. No.:+91 120 4290836 E-Mail:store.gn@agkem.com

CHENNAI OFFICE

Survey No 127/4, Godown No 5, Varalakshmi Nagar,
Maduravoyal, Chennai, Tamil Nadu, 600095
Mob.:9319177355 E-Mail:chennai@agkem.com

BENGALURU OFFICE

Shop No:03, Ground Floor, Near Global IT Park,
Pattanagere Main Road, Rajarajeshwari Nagara
Begaluru-560098, Karnataka
Mob.:9702187973 E-Mail:jekin@agkem.com

HYDERABAD OFFICE

Shop 6, Plot no. 44, Mamta Nagar Colony ,
Road No. 1, Nagole Hyderabad-68
Mob.:9599001079 E-Mail:info@agkem.com

JAIPUR OFFICE

Shop no. 13-14 near Geetanjali Hotel Toll Tax, Tonk
Road, Sanganer, Jaipur Ph. No.:0141 486 6081
Mob.:9571467111 E-Mail:deepak@agkem.com

Agkem Impex Pvt. Ltd.

Head Office (Delhi)

📍 503-504, Rishabh Corporate Tower, Plot no.16
Community Center, Karkardooma, Delhi-110092

☎ 011-43022244/55/66

✉ info@agkem.com 🌐 www.agkem.com

📞 Customer Support:- 9599001079



To Know More, Please Visit